

SUSPENDED  
CEILING  
RECESSED



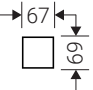
# DIAMANTE


DIAMANTE is a luminous LED line that focuses on the sheer effect of light. It blends with the architectures, adapting to every needs: it forms a perfect atmosphere in offices or conference rooms and accurately accentuates the environment-enhancing details thanks to the adjustable spot modules. Thanks to its slim and simple design, it crosses the rooms with an elegant line of light.

Design Rossi Bianchi Lighting Design.

$\eta$	>90 lm/W
UGR	<19
CRI	>80
IP	40







mm	577	863	1149	1435	1721	2007	2293	2579	2865	3151
W										
LP	12	18	24	30	36	42	48	54	60	66
LP Double Emission			30	36	48	54	72	78	84	90
HP			40	50	60					
HP Double Emission			46	56	72					



SUSPENDED  
CEILING



RECESSED



# DIAMANTE

## DESCRIPTION

DIAMANTE comes from passion for technique and design. It's an exclusive line that reperform light control and integrates performance and flexibility into a single product. The DPL technology for controlled UGR combined with the additional raster for glare control make the product perfect for working space.

Available as a stand-alone product, configurable as a system, or in the FREE version that allows you to use the luminous modules in a versatile way coupling them with lamp bodies of different sizes.

## SPECIFICATIONS

Integrated driver  
Colour temperature: 3000K/4000K  
CRI>80  
McAdams 3  
Life Time: 50.000 h - 5 years complete warranty  
Eye safety: risk-free (RG 0) in accordance with EN62471:2009

## FLUX MAINTENANCE

CURRENT	L90/B10	L90/B50	L80/B10	L80/B50	L70/B10	L70/B50*
350mA	12.000h	18.000h	26.000h	39.000h	42.000h	> 60.000h
500mA	12.000h	18.000h	26.000h	39.000h	42.000h	> 60.000h

\*E.g. L70 = guaranteed luminous flux of the entire luminaire 70%  
B50 = 50% of the diodes may have a flux reduction below 70%

## OPTICS

DPL technology diffuser UGR <19 and additional raster for glare control in injection-molded vacuum metallized polycarbonate.

## BODY

Aluminum extruded body powder coated finish.

## LEGAL REFERENCES

Conforms to the safety standards EN 60 598-1 and UNI EN 12464-2 (lighting for working places).

## CERTIFICATIONS

CE IP 40

ErP class: A<sup>++</sup>

## COLOURS

Black RAL 9005 - Code: C8



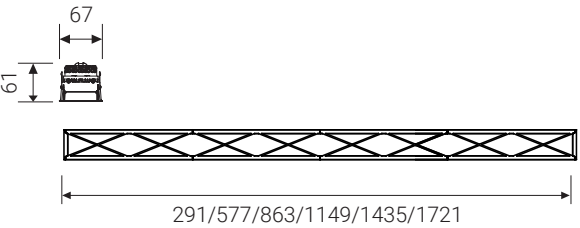
**Design**  
Rossi Bianchi  
Lighting Design

## ON REQUEST

- Wiring DALI dimmable - Code: RDD (verify the version available)
- Wiring DIM2mains dimmable - Code: DDM (verify the version available)
- Wiring with emergency kit - Code: EM for 1 hour / EM3H for 3 hour (verify the version available)

# DIAMANTE FREE LOW POWER

**OPTICS**  
DPL technology diffuser UGR <19 and additional raster for glare control in injection-molded vacuum polycarbonate.



\* Module for single installation on plasterboard ceiling with 82AA17ML accessory or on DIAMANTE FREE PROFILE for ceiling, suspension or recessed applications (pag. 16).

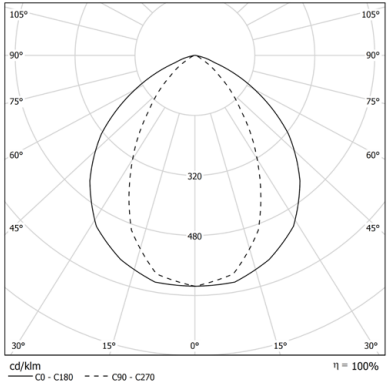
COD		lm	mm
82DPL6L4CL	6W 4000K	510	291
82DPL12L4CL	12W 4000K	1020	577
82DPL18L4CL	18W 4000K	1530	863
82DPL24L4CL	24W 4000K	2040	1149
82DPL30L4CL	30W 4000K	2550	1435
82DPL36L4CL	36W 4000K	3060	1721

COD		lm	mm
82DPL6L3CL	6W 3000K	498	291
82DPL12L3CL	12W 3000K	996	577
82DPL18L3CL	18W 3000K	1494	863
82DPL24L3CL	24W 3000K	1992	1149
82DPL30L3CL	30W 3000K	2490	1435
82DPL36L3CL	36W 3000K	2988	1721



IP 40

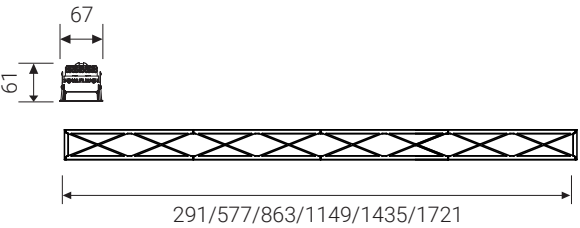
A++



6W	287 mm
12W	573 mm
18W	859 mm
24W	1145 mm
30W	1431 mm
36W	1717 mm

# DIAMANTE FREE HIGH POWER

**OPTICS**  
DPL technology diffuser UGR <19 and additional raster for glare control in injection-molded vacuum polycarbonate.



\* Module for single installation on plasterboard ceiling with 82AA17ML accessory or on DIAMANTE FREE PROFILE for ceiling, suspension or recessed applications (pag. 16).

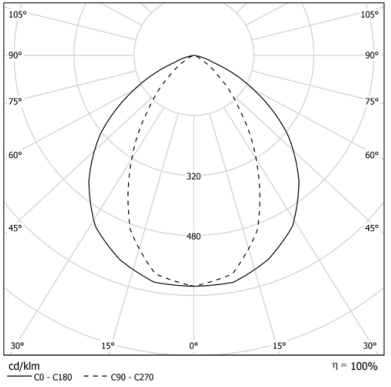
COD		lm	mm
82DPL10L4HPCL	10W 4000K	880	291
82DPL20L4HPCL	20W 4000K	1760	577
82DPL30L4HPCL	30W 4000K	2640	863
82DPL40L4HPCL	40W 4000K	3520	1149
82DPL50L4HPCL	50W 4000K	4400	1435
82DPL60L4HPCL	60W 4000K	5280	1721

COD		lm	mm
82DPL10L3HPCL	10W 3000K	860	291
82DPL20L3HPCL	20W 3000K	1720	577
82DPL30L3HPCL	30W 3000K	2580	863
82DPL40L3HPCL	40W 3000K	3440	1149
82DPL50L3HPCL	50W 3000K	4298	1435
82DPL60L3HPCL	60W 3000K	5160	1721



IP 40

A++



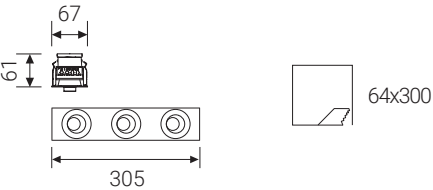
6W	287 mm
12W	573 mm
18W	859 mm
24W	1145 mm
30W	1431 mm
36W	1717 mm




# DIAMANTE SPOT

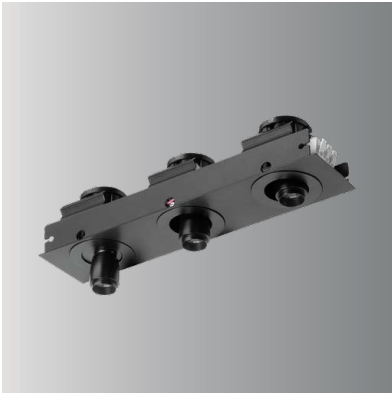
### OPTICS

Removable and adjustable spot with polycarbonate lens 36°.

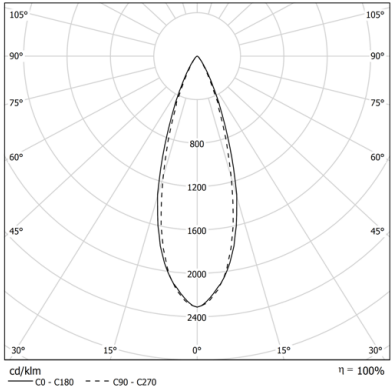


\* Module for single installation on plasterboard ceiling with 82AA17ML accessory or on DIAMANTE FREE PROFILE for ceiling, suspension or recessed applications (pag. 16).

COD		lm	mm
82AA33L4	3x3W 4000K	420	305x67
82AA33L3	3x3W 3000K	390	305x67

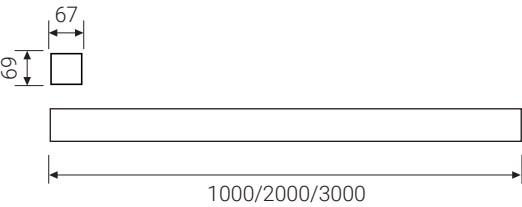


IP 40 A++



# DIAMANTE FREE PROFILE

Aluminum body for ceiling, suspension or recessed applications.



COD	mm
82AA1000	1000
82AA2000	2000
82AA3000	3000

# ACCESSORIES



**82AA13**  
Single wire suspension kit with clutch operated adjustment mechanism. Cable length 1500mm.

**82AA1330**  
Single wire suspension kit with clutch operated adjustment mechanism. Cable length 3000mm.

**82AA16**  
3 pole-ceiling rose power cable. Cable length 2000mm.



**82AA165P**  
5 pole-ceiling rose power cable. Cable length 2000mm.



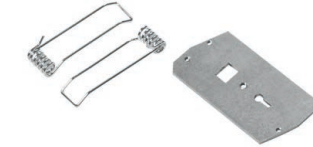
**82AA09**  
End cap kit for ceiling and suspended version.



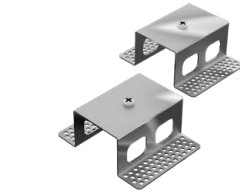
**82AA11**  
Linear joint for ceiling and suspended version.



**82MC500:** 500mm  
**82MC1000:** 1000mm  
Aluminium blind module connection adaptable to size on site.



**82AA17ML**  
Springs for installation of FREE recessed light modules on plasterboard.



**82AA17**  
Brackets kit for recessed installation.

# TECHNICAL NOTE

## FREE PROFILE AND LIGHTING FIXTURE INSTALLATION

