

One

One is a ceiling-recessed luminaire that deploys high-definition Lightcore optic micro-reflectors at extremely precise beam angles. An innovative downlight for both general and accent lighting, the One achieves optimum visual comfort through outstanding glare control.

For precise orientation, the adjustable One Plus's housing swivels below the rim, offering an untouched beam of 90% luminous intensity within the beam angle regardless of how it's oriented.



One

Body

Aluminium body and heat sink.
Stainless steel springs with electrostatic 100% polyester paint finish.

Optics

Lightcore is built based on micro surfaces with complex geometry coated with aluminium alloy, creating a high-gloss, entirely mirrored surface. Accurate reflector for a defined and controlled beam of light, achieving maximum efficiency.

Spot-lens with individual complex surface rips to provide a focal light and an extremely narrow beam.

Light source

O/M LED modules with excellent colour consistency (3 step-MacAdam) and long operating lifespan (>50.000h; L80/B10).

Accessories

Trimless version with recessing accessories supplied separately.

Dimmable

Controlling intensity is easy using a DALI dimming system.



One S

Trim Ø85mm / Trimless Ø78mm

One M

Trim Ø120mm / Trimless Ø114mm

One L

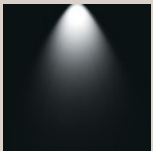
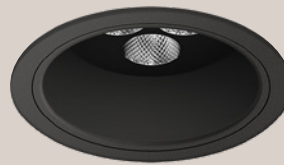
Trim Ø150mm / Trimless Ø144mm



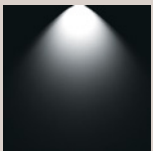
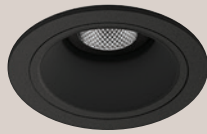
Spot 14°
UGR*



Medium 32°
UGR = 0



Flood 46°
UGR < 11



Wide flood 66°
UGR < 22



	One S	One M	One L
2700K	5W / 450lm	11W / 800lm	19W / 1750lm
3000K	5W / 550lm	11W / 1250lm	19W / 2200lm
4000K	5W / 600lm	11W / 1400lm	19W / 2400lm

Finishes ○ .01 White ● .02 Black * Coming soon