

Uw

Developed with Bartenbach GmbH, the elegant, integrated Uw's asymmetrical reflector drapes walls with a controlled sheet of light. Use it to wash vertical surfaces, intensify textures and enrich features, as its discreet, uniform light is ideal for showcasing art and wall displays.

With its highly versatile, streamlined profile, Uw is available as a linear system that can be extended indefinitely.



Uw

Body

Aluminium profile with 25 micron maximum corrosion resistance anodisation in matte finish or electrostatic 100% polyester paint with textured-finish suitable for adverse climate conditions.

Diffuser

High performance acrylic diffuser.

Reflector

Asymmetrical aluminium reflector with 98% reflection. Developed in partnership with Bartenbach GmbH, its geometry outputs all its light as a uniform asymmetrical beam.

End caps

Anodised aluminium end caps in matte finish.

Modules

O/M LED modules with excellent colour consistency (3 step-MacAdam) and long operating lifespan (>50.000h; L80/B10). Also available in tunable white 2700K to 4000K.

Accessories

Fitting accessories for different applications are available.

Dimmable

Controlling intensity is easy using a DALI dimming system.



Uw

Profile

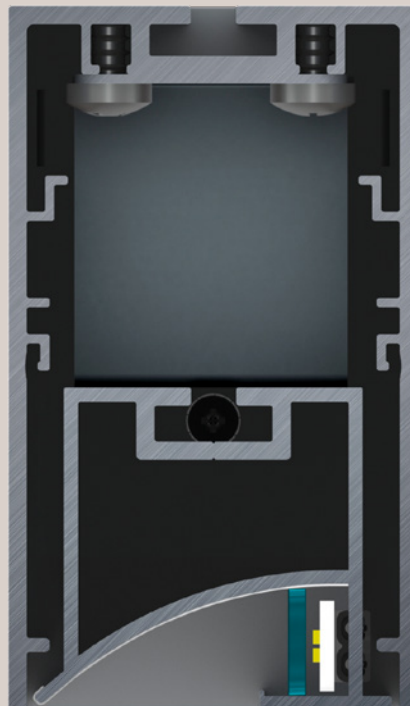
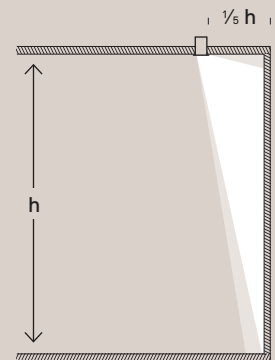
600mm to 3000mm

Optical modules

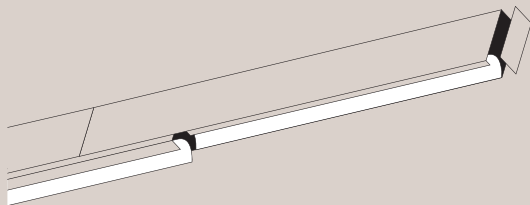
600mm

1200mm

The asymmetrical light effect can evenly cover an entire wall from a distance of as little as $\frac{1}{5}$ the wall's height.



The Uw is available as a linear system, and can be paired with any of the U family luminaires for a consistent look.



	Uw optical module 600mm	Uw optical module 1200mm
2700K	16W / 1900lm	32W / 3800lm
3000K	16W / 2300lm	32W / 4600lm
4000K	16W / 2400lm	32W / 4800lm
Tunable white	16W / 2100lm	32W / 4200lm

Finishes ○ .01 White ● .02 Black ● .10 Anodised aluminium