

ALU-EPOXY LED PROFILE

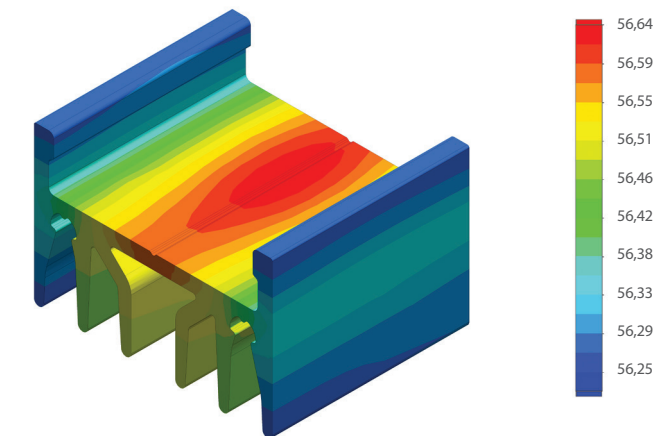
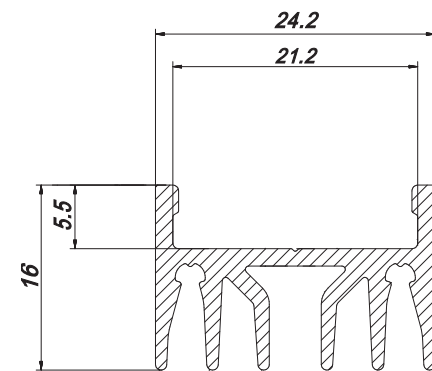
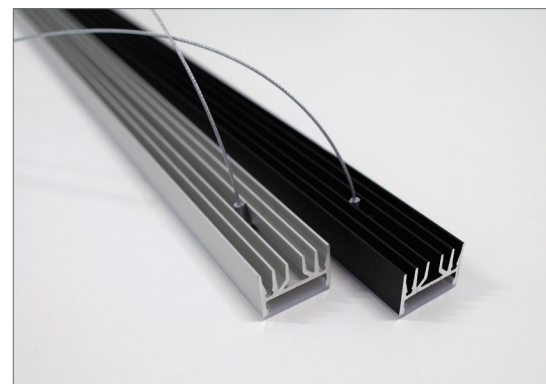
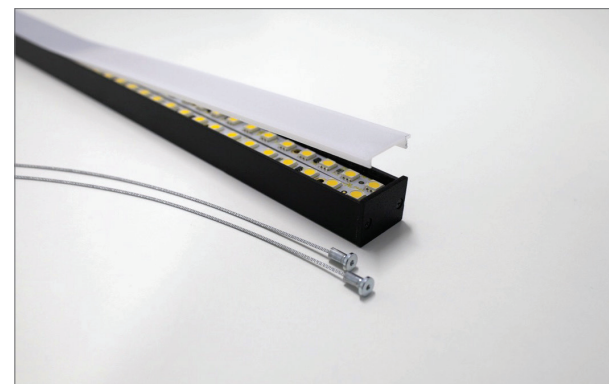
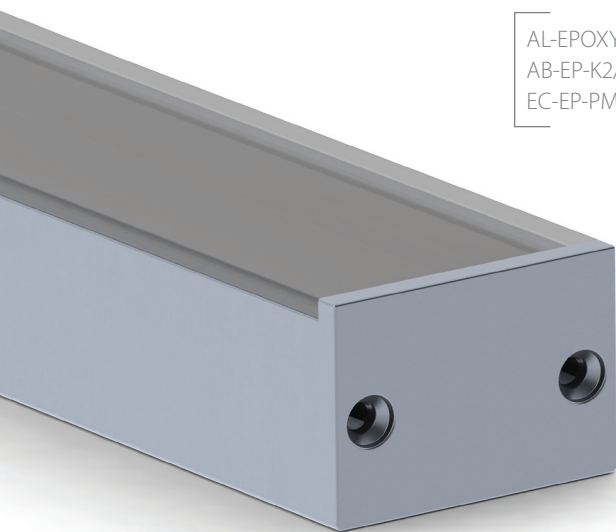
ALU-EPOXY; 16 x 24mm

Alu-Epoxy, double row high performance, quality finish aluminum LED profile provide great cooling condition to the LEDs which automatically extend their lifetime. The thermal heat dissipation analyses/tests shows stable temperature of 55°C@Ta=25°C at load of 36W/m.

One product two applications - indoor/outdoor.

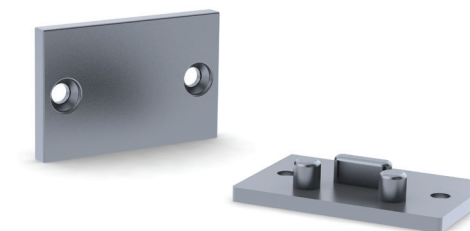
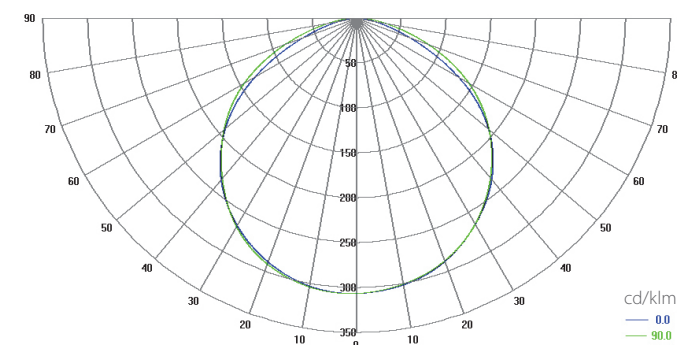
IP67 linear heat sink solution for outdoor use if fill up with optically clear resin or silicone resin. We recommend to use dedicated for LEDs thermal conductive resin as ER-2220 or silicone resin SC3001(Electrolube). Additionally the profile can be use for indoor applications to build in or suspend from the ceiling. Alu-Epoxy is compatible with T sleeve finish suspension cables and comes with two types of aluminum end caps. Trim less new generation material diffuser with satin mat finish reduce the light lost to minimum and lifting up the LED fixture light efficiency.

AL-EPOXY-2/B2
AB-EP-K2/M2
EC-EP-PMMA



Temperature (Solid) [°C]
Temperature ambient: 25°C
Total power: 36 W/m (72 LEDs)
LED stripe: 17-DURIS
Installation mode for test purpose: pendant

Polar Candela Distribution Plot Using Missed Rays



EC-EP-RESIN

AL-EPOXY-2
+ RESIN, SILICONE RESIN

