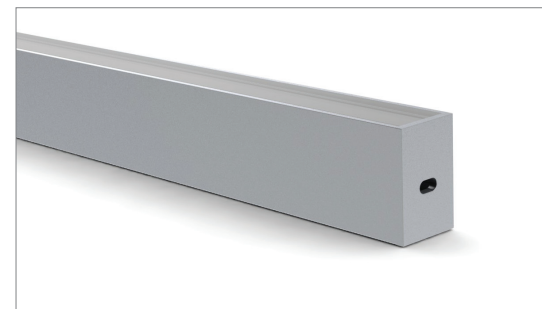
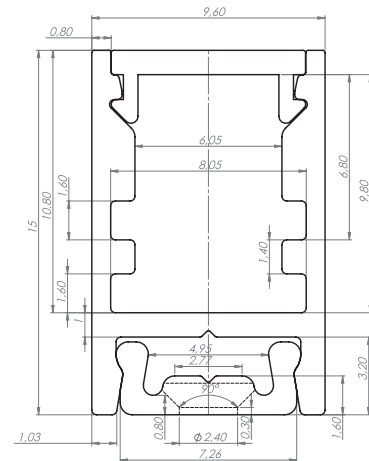


**ALU-SWISS; 9 x 15mm**

- Small in dimensions quality finish LED profile for 6mm/8mm wide LED stripes
- Available with snap in installation base for ALU-SWISS profile which simplify the installation
- High standard of anodizing aluminum
- High Quality UV resistant polycarbonate snap in diffuser
- Two different light diffusers to choice from, frosted (LEDs dots free) and transparent.
- LEDs DOTS FREE design (frosted diffuser)
- Multiple purpose profile with smooth line of light
- Suitable for standard 6mm/8mm wide LED stripes with high density 120 leds/m
- Available on stock in anodized silver color
- Possible length and color customizing at MOQ
- Available on stock with dedicated end caps and mounting base
- Indoor use only, IP20

- Multiple purposes LED profile for 6mm/8mm wide LED stripes
- Hotels, cinemas, restaurants, night clubs, stair LED lighting
- Furniture production
- Retail stores products LED lighting illumination



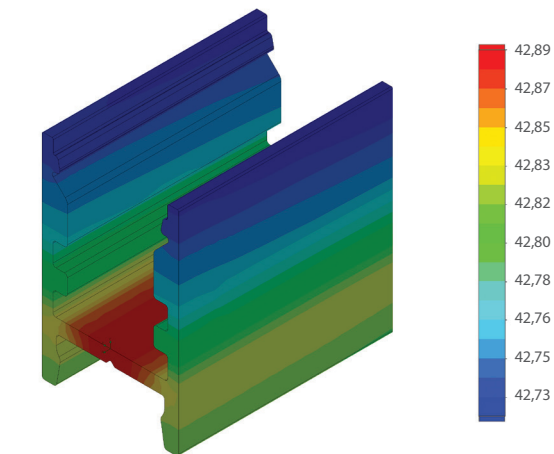
## DESCRIPTION

This is small in dimensions LED profile which is dedicated for the standard 6mm/8mm LED stripes. ALU-SWISS profile is available with choice of two high Quality, snap-in, UV resistant diffusers, frosted "LEDs DOTS FREE" and transparent. We designed and made for ALU-SWISS profile the snap-in installation base which you instal to the surface first then just snap-in the profile with the LEDs. Small dimensions of this profile give opportunity to use it in many applications. The profile can be use for the kitchen cabinets LED lighting, retail stores shelf lighting, automotive or marine bouts discrete LED lighting and etc. Profile is available with related accessories such as aluminum end caps and the snap-in mounting base which helps professionally finish the profile.

## ALU-SWISS ANALYSES

## Temperature (Solid) [°C]

Temperature ambient: 25°C  
Total power: 10,6 W/m (126 LEDs)  
LED stripe: 6-DURIS



### Polar Candela Distribution Plot Using Missed Rays

