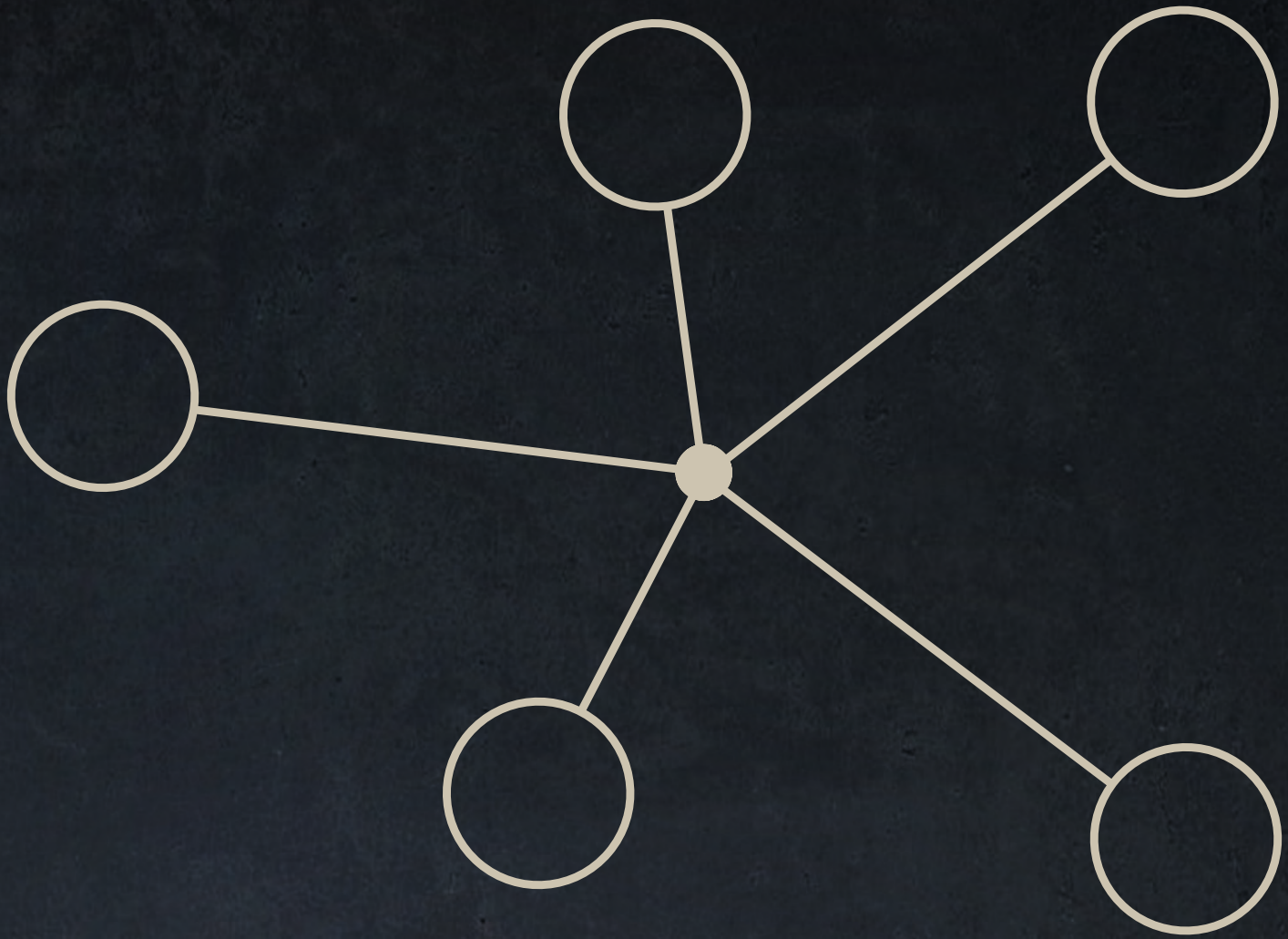




Arcdecor & Macrolux
Innovative Luxury Elements



2026
MILANO CORTINA
PUCK FIVE LIMITED EDITION

I cerchi olimpici di Milano e Cortina.

Il prodotto "Puck Five limited edition" è stato creato per celebrare il prestigioso evento delle Olimpiadi di Milano Cortina 2026.

Per commemorare questa importante manifestazione sportiva verranno prodotti 2026 pezzi.

I cinque anelli simboleggiano i cinque continenti, proprio come i cinque cerchi olimpici che uniscono i popoli di tutto il mondo in uno spirito di competizione e fair play.

The Olympic rings of Milan and Cortina.

The product "Puck Five limited edition" was created to celebrate the prestigious event of the Milano Cortina 2026 Olympics.

To commemorate this important sporting event, 2026 pieces will be produced.

The five rings symbolize the five continents, just like the five Olympic rings that unite people from all over the world in a spirit of competition and fair play.

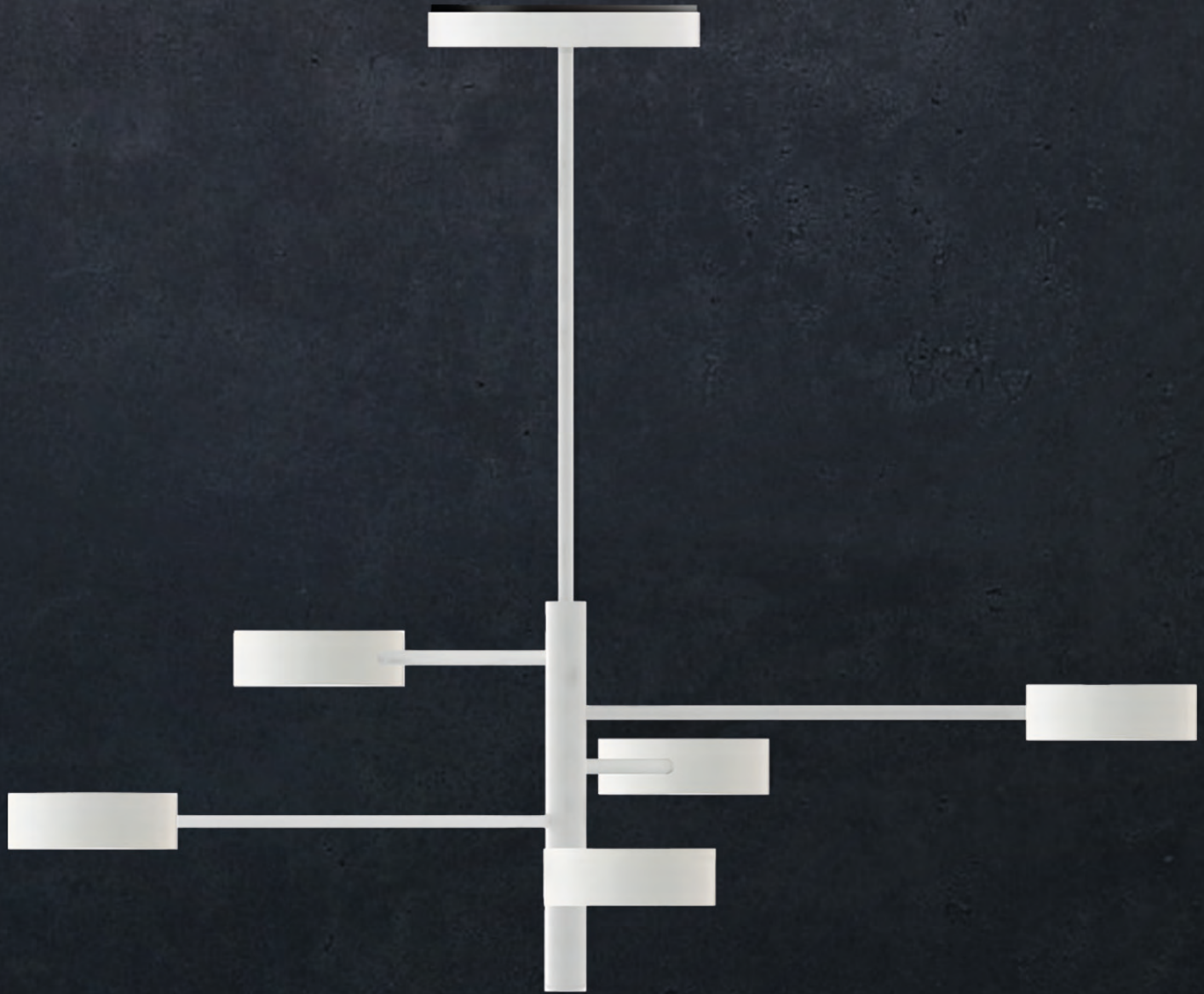
Puck Five Limited Edition

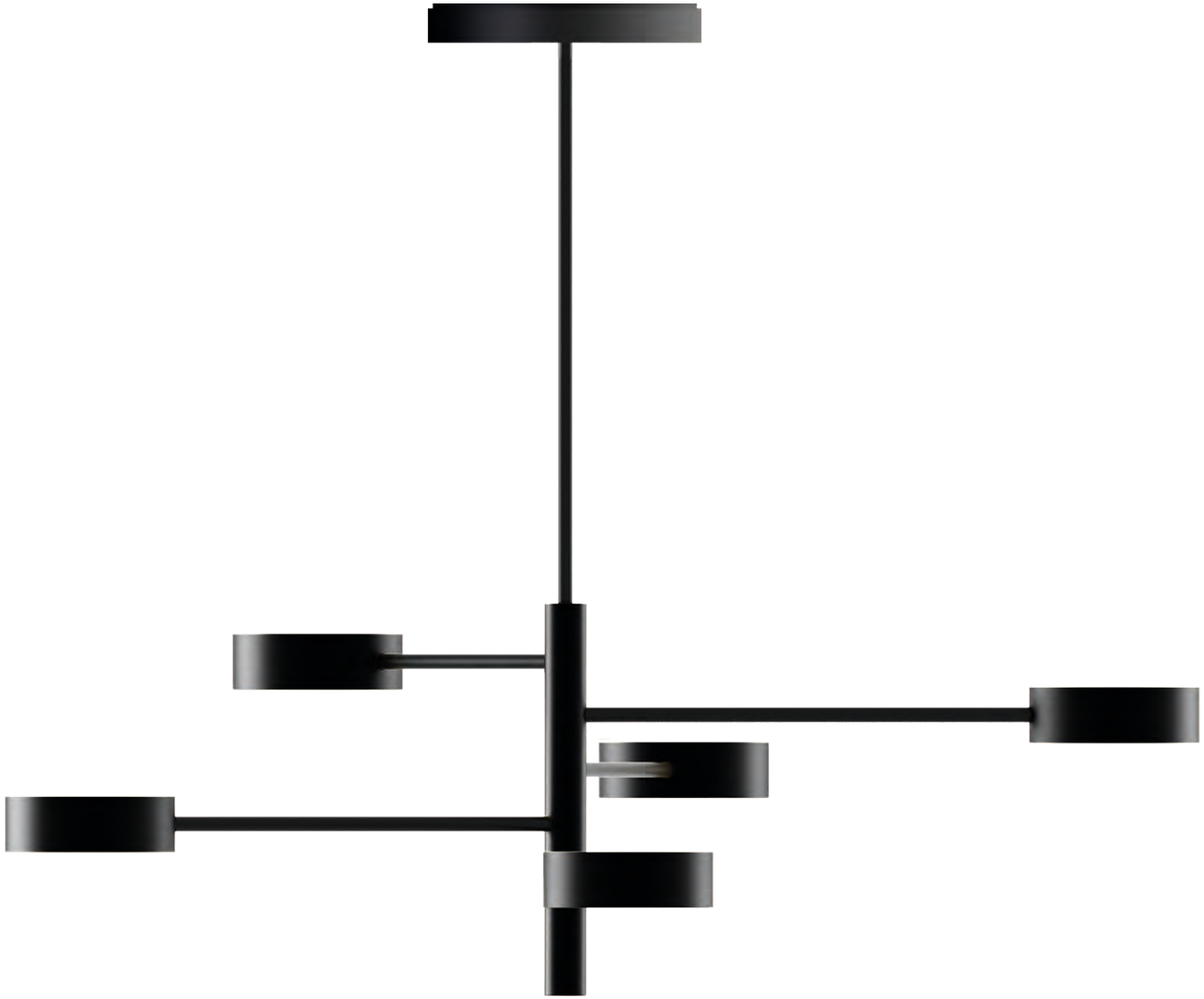
Scoprendo un nuovo
significato della luce,
uniamo l'architettura e il
design per creare
un'esperienza senza
precedenti che emoziona
e stupisce.

When discovering a new
meaning of light, we
combine architecture and
design to create an
unprecedented experience
that excites and amazes.













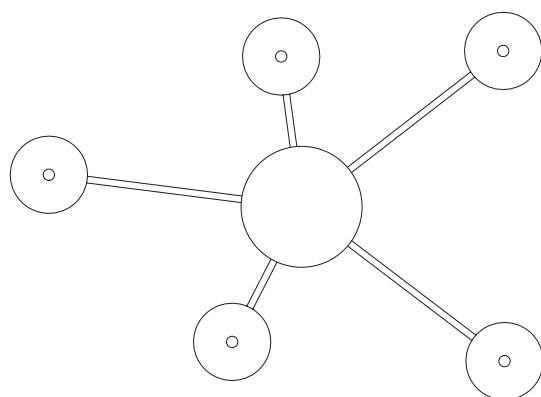
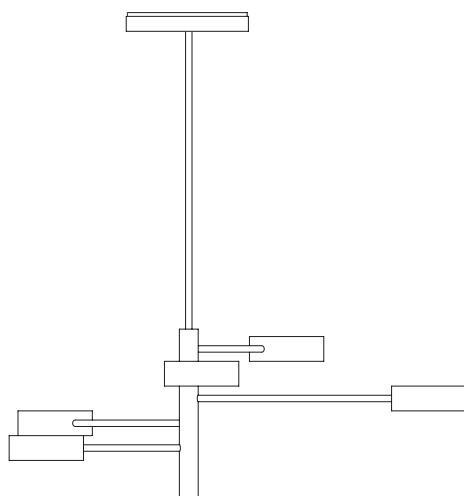




Puck Five

LIMITED EDITION

finiture: bronzo, bianco, nero.
finishing: bronze, white, black.



Puck five è perfetta per creare ogni tipo di atmosfera grazie ad un mix tra illuminazione d'ambiente, attraverso i cinque anelli a luce diffusa, e una illuminazione puntuale con il proiettore centrale a luce diretta. La versione Casambi con il controllo wireless, consente un utilizzo versatile e flessibile in grado di adattarsi a qualsiasi ambiente e di offrire un'ampia gamma di scenari di regolazione. Ad esempio in modalità "lume di candela" del solo proiettore alloggiato nel corpo centrale. È la scelta ideale per chi cerca una soluzione di alta qualità, in grado di unire funzionalità e design elegante.

Puck five is perfect for creating any type of atmosphere thanks to a mix of ambient lighting, through the five rings with diffused light, and focused lighting with the central projector with direct light. The Casambi wireless control version allows versatile and flexible use that can adapt to any environment and offer a wide range of control scenarios. For example, in "candlelight" mode of the only projector housed in the central body. It is the ideal choice for those looking for a high quality solution, able to combine functionality and elegant design.



96



4



2

Benvenuti nel nostro mondo di prodotti ibridi che combinano la funzionalità delle soluzioni architettoniche con il design dei prodotti decorativi.

Offriamo soluzioni di illuminazione innovative e uniche come elemento di differenziazione nel mercato.

Grazie alla nostra capacità di integrare funzionalità e design, i nostri prodotti si distinguono per la loro versatilità, qualità e durabilità.

Arcdecor & Macrolux
Innovative Luxury Elements

Welcome to our world of hybrid products, which combine the functionality of architectural solutions with the design of decorative products.

We offer innovative and unique lighting solutions as a differentiating element in the market.

Thanks to our ability to integrate functionality and design, our products stand out for their versatility, quality and durability.



Puck

La nuova collezione Puck
combina il design puro e senza
tempo degli anni '50.

The new Puck collection
combines the pure and timeless
design of the 50s.





Puck



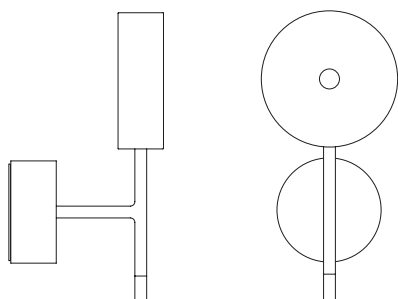






Puck

finiture: bronzo, bianco, nero.
finishing: bronze, white, black.



La versione a parete è dotata di doppio schermo in vetro retroverniciato in bianco per garantire una distribuzione morbida e confortevole della luce.

Realizzata in alluminio verniciato bianco, nero e anodizzato bronzo, alloggia un LED ad emissione diretta ed indiretta.

The wall version is equipped with a double glass screen painted in white to ensure a soft and comfortable distribution of light.

Made of white, black and bronze anodized aluminum, equipped with a one LED with direct and indirect emission.



296



4496



2296

Live the beauty

La cura per i dettagli e il design valorizza l'armonia degli interni, sia in termini estetici che funzionali.

The attention to detail and design enhances the harmony of interiors, both aesthetically and functionally.

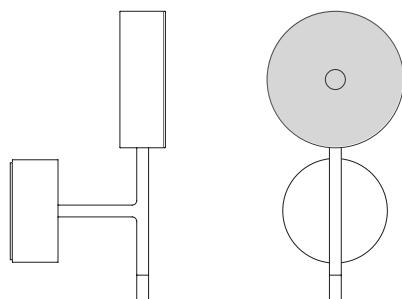






Puck Cover

finiture: bronzo, bianco, nero.
finishing: bronze, white, black.



La collezione Puck incarna una bellezza senza tempo, con uno stile sofisticato, creato con l'intento di esaltare il design e l'eleganza. Ogni dettaglio è stato curato con la massima attenzione per garantire un'esperienza estetica senza pari. La versione a parete è dotata di diffusore in vetro per l'illuminazione indiretta e copertura in alluminio verniciato.

The Puck collection embodies timeless beauty, with a sophisticated style, created with the intent to enhance design and elegance. Every detail has been crafted with the utmost care to guarantee an unparalleled aesthetic experience. The wall version is equipped with a glass diffuser for indirect lighting and a painted aluminum cover.



296



4496



2296

Controller

La lampada a parete Puck con controller Casambi è un'innovativa soluzione di illuminazione che combina design moderno, funzionalità avanzate e tecnologia di controllo intuitiva.

Questa lampada è ideale per ambienti residenziali e commerciali che richiedono un'illuminazione di qualità e la possibilità di gestirla tramite dispositivi mobili o comandi vocali.

The Casambi-controlled wall lamp Puck is an innovative lighting solution that combines modern design, advanced functionality, and intuitive control technology.

This lamp is ideal for residential and commercial environments that require quality lighting and the ability to manage it through mobile devices or voice commands.



Puck Mono

La sua forma circolare crea un contrasto accattivante con le linee rette dell'architettura, aggiungendo interesse visivo e dinamismo a qualsiasi spazio.

Its circular shape creates an appealing contrast with the straight lines of the architecture, adding visual interest and dynamism to any space.





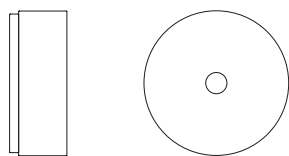
Light equals breath

La luce calda che emana può creare un'atmosfera accogliente e tranquilla, ideale per una zona di passaggio e altre aree di relax.

The warm light it emits can create a cozy and peaceful atmosphere, ideal for a passageway and other relaxation areas.



Puck Mono



finiture: bronzo, bianco, nero.
finishing: bronze, white, black.

Installabile sia a parete che a soffitto, Puck Mono è dotata di schermo in vetro retroverniciato bianco per garantire una distribuzione morbida e confortevole della luce. Realizzata in alluminio verniciato bianco, nero e anodizzato bronzo, alloggia un singolo LED ad emissione diretta.

Installable on both walls and ceilings, Puck Mono is equipped with a back painted white glass screen to guarantee a soft and comfortable distribution of light. Made of painted white, black and anodized bronze aluminum, it houses a single direct emission LED.



96



4



2



Puck Small

Forma compatta verticalizzata che consente una emissione indiretta unita a quella diretta, per enfatizzare pareti o semplicemente per illuminare soffitti con luce morbida e diffusa.

Compact vertical shape that allows indirect emission combined with direct emission, to emphasize walls or simply to illuminate ceilings with soft and diffused light.



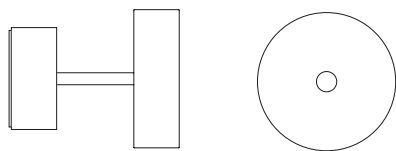
Il corpo distanziato permette un contributo di luce indiretta ideale per una illuminazione rilassante di elevata resa.

Minimalist design, direct/indirect emission to highlight walls or to illuminate ceilings with delicate and uniform light.





Puck Small



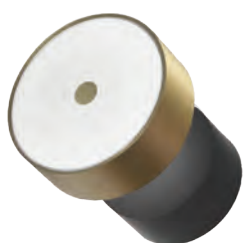
finiture: bronzo, bianco, nero.
finishing: bronze, white, black.

Progettata per un arredo easy e raffinato, mantiene ovunque una precisa identità formale.

Realizzata in alluminio verniciato bianco, nero e anodizzato bronzo, alloggia un LED ad emissione diretta ed indiretta.

Designed for easy and refined furnishings, it maintains a precise formal identity everywhere.

Made of white, black and bronze anodized aluminum, equipped with one LED with direct and indirect emission.



96



4



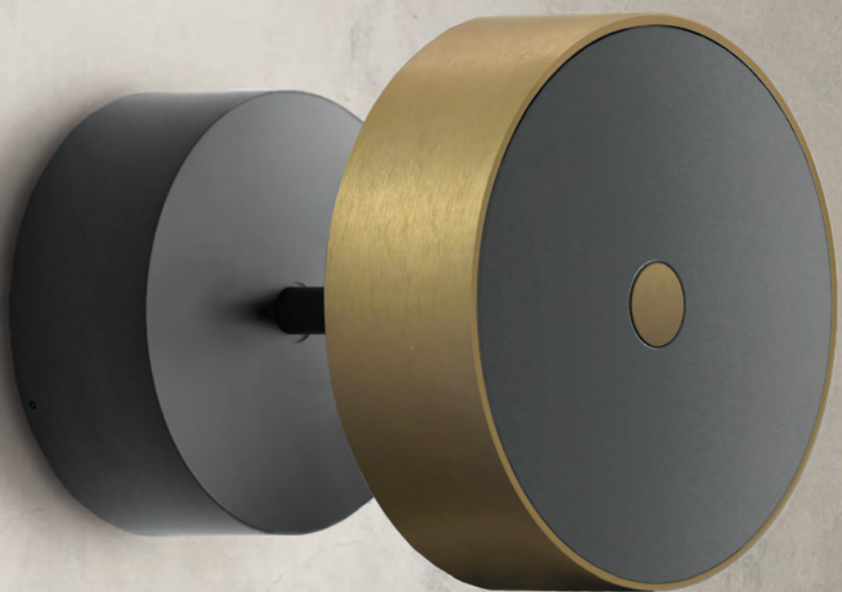
2

Puck Small Cover

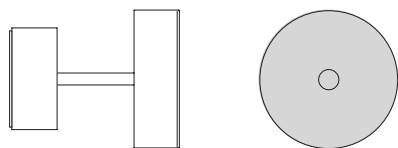
La versione con copertura cieca garantisce un'illuminazione uniforme e priva di abbagliamento, la sua luce indiretta crea un'atmosfera piacevole e rilassante, perfetta per ogni momento della giornata.

The version with a blind cover ensures uniform and glare-free illumination, while its indirect light creates a pleasant and relaxing atmosphere, perfect for any time of the day.





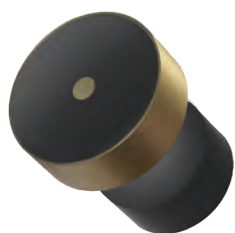
Puck Small Cover



finiture: bronzo, bianco, nero.
finishing: bronze, white, black.

Installabile sia a parete che a soffitto,
Puck Small Cover è dotata di schermo in
vetro e copertura in alluminio verniciato.

Installable on both walls and ceilings,
Puck Small Cover is equipped with a glass
screen and painted aluminum cover.



96



4

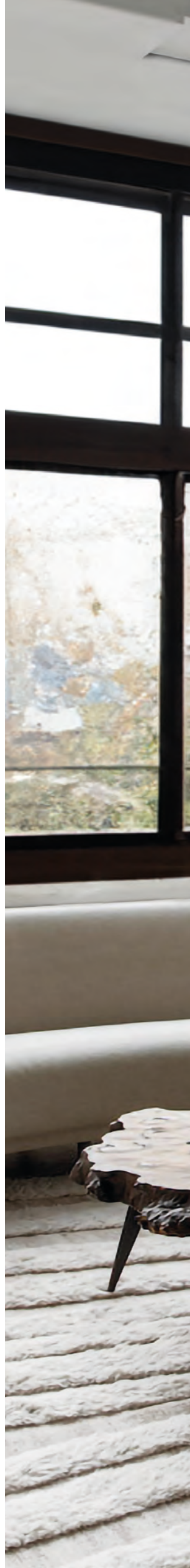


2

Puck Lite

La versione doppia prevede l'estensione dei corpi luce con due versi applicativi, destro e sinistro.

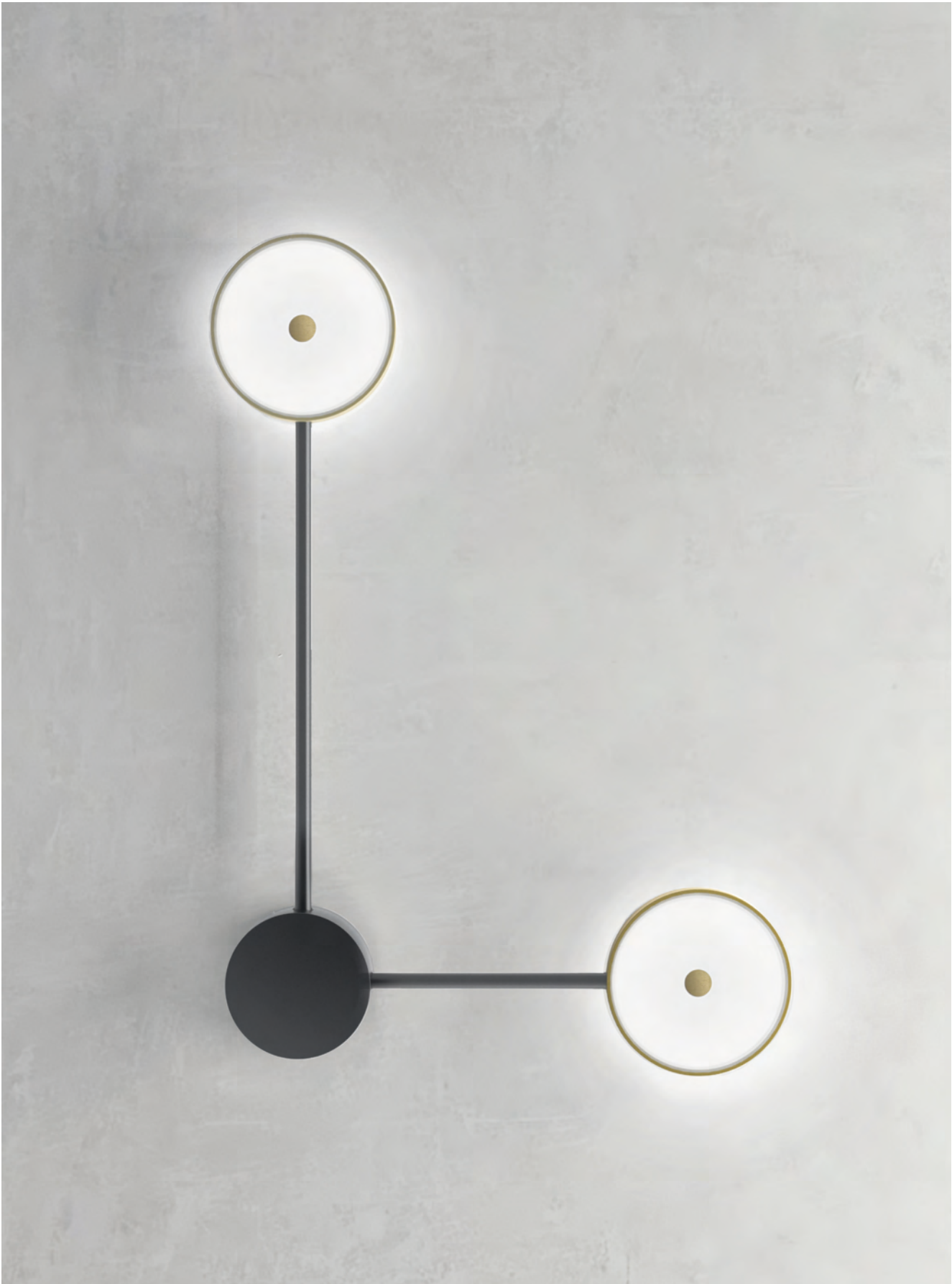
The double version involves extending the light bodies with two application versions, right and left.



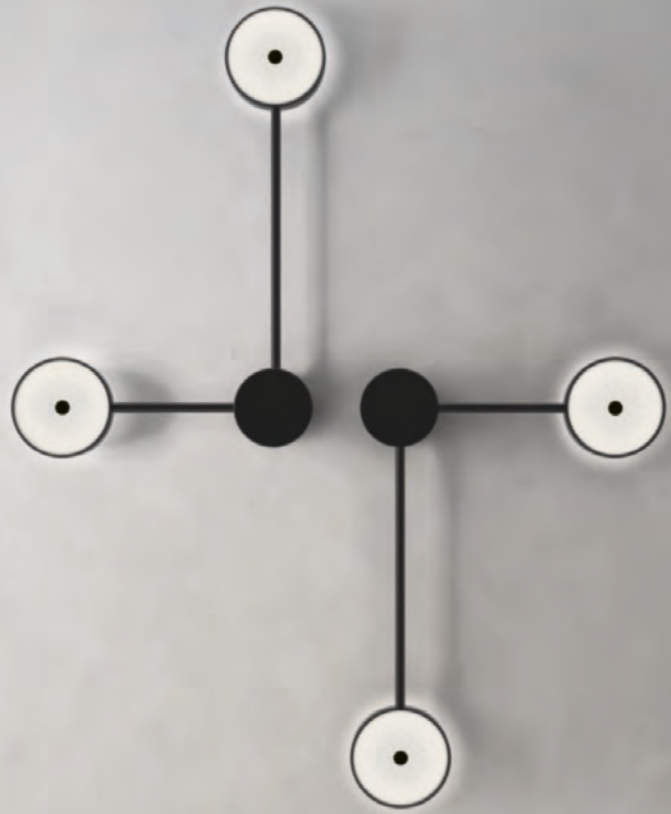


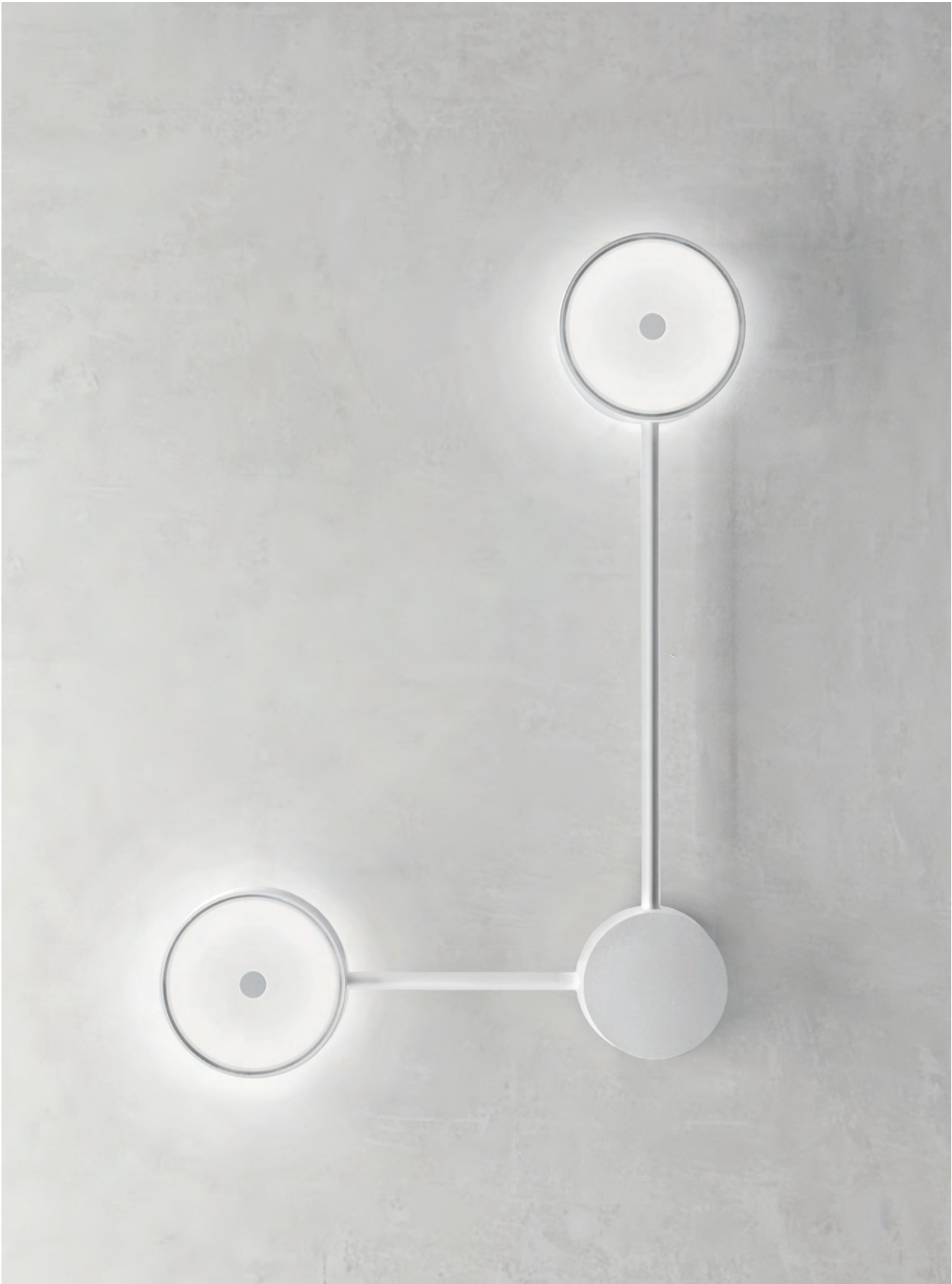






Right





Left

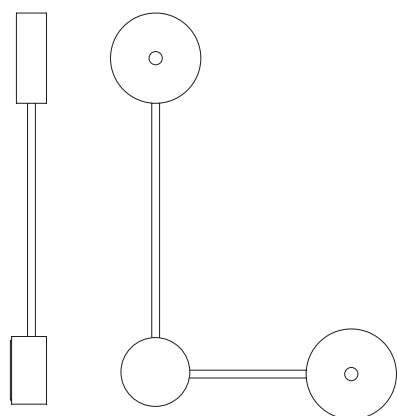
Puck Lite

finiture: bronzo, bianco, nero.
finishing: bronze, white, black.

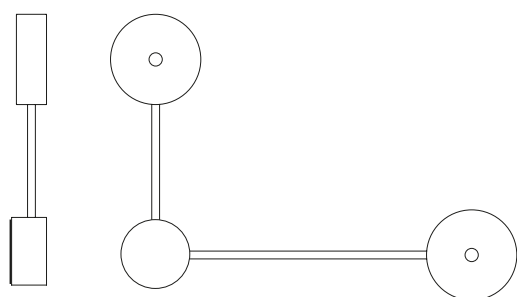
Questa configurazione permette di ottenere un'emissione più ampia e una maggiore flessibilità di installazione, con la possibilità di dirigere ciascun apparecchio nella direzione desiderata per una diffusione ottimale della luce. La doppia emissione consente di adattare al meglio l'illuminazione all'ambiente e allo spazio da illuminare. Realizzata in alluminio verniciato bianco, nero e anodizzato bronzo, alloggia un LED ad emissione diretta ed indiretta.

This configuration allows for a wider emission and greater installation flexibility, with the ability to direct each luminaire in the desired direction for optimal light diffusion. The double emission allows the lighting to be best adapted to the environment and space to be illuminated. Made of painted white, black and anodized bronze aluminium, it houses an LED for direct and indirect emission.

Right



Left



96



4



2

Puck One

Puck One, un corpo cilindrico disponibile nelle eleganti finiture bianco/nero laccato oppure in raffinato bronzo anodizzato spazzolato. Dotata di 2 prolunghe in alluminio dalla funzione estetica e di bilanciamento che avvolgono armoniosamente il cavo elettrico. La lampada diffonde una luce soffusa grazie al doppio vetro retrolaccato bianco. Il cavo di alimentazione è abbinato al colore della struttura, per una perfetta armonia visiva.

Puck One, a cylindrical body available in elegant black/white lacquered finishes or in refined brushed anodized bronze. Equipped with 2 aluminum extensions with an aesthetic and balancing function that harmoniously wrap the power cord. The lamp diffuses a soft light thanks to the double back-lacquered white glass. The power cord matches the color of the structure, for perfect visual harmony.





THE KINFOLK TABLE
Constructing Paradises



Where Light and Space Become One

Puck One Diameter 150 mm

The Union Between Shadow and Light

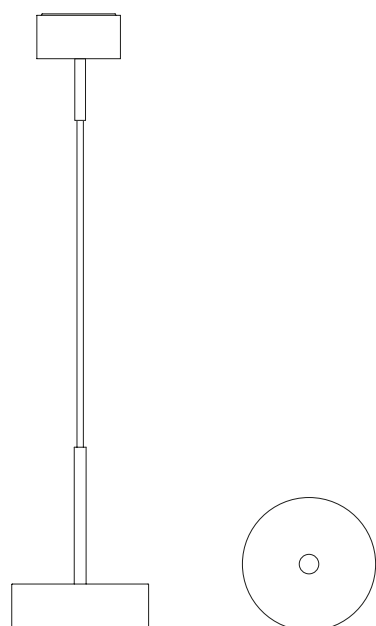






Puck One

finiture: bronzo, bianco, nero.
finishing: bronze, white, black.



Puck One è una sospensione progettata per un arredo semplice e raffinato, mantiene ovunque una precisa identità formale. Dotata di doppio schermo in vetro retro verniciato in bianco per garantire una distribuzione morbida e confortevole della luce. Realizzata in alluminio verniciato bianco, nero o anodizzato bronzo, ospita una sorgente LED a emissione diretta e indiretta.

Puck One suspension is designed for a simple and refined furniture, it maintains a precise formal identity. It is equipped with a double screen in white back-painted glass for a soft and comfortable light distribution. Made of white, black or bronze anodized painted aluminum, equipped with a direct and indirect emission LED source.



96



4



2

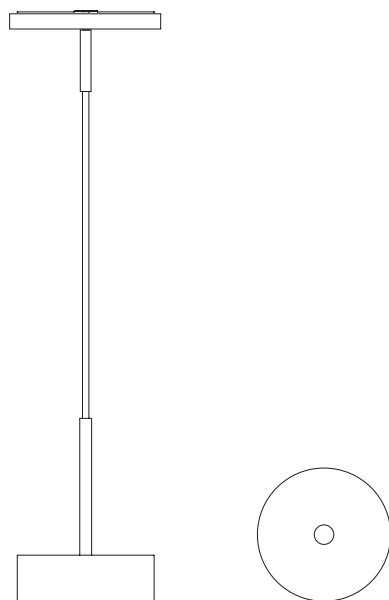


Puck One 48

finiture: bronzo, bianco, nero.
finishing: bronze, white, black.

Caratterizzata dalle linee pulite del design moderno, la sospensione Puck One 48V per i modelli "track design" di Macrolux è un pezzo elegante e versatile da utilizzare in sale da pranzo, ingressi e altro ancora. La straordinaria collezione Puck è composta da luci funzionali e compatte che si adattano a qualsiasi stile grazie alle differenti declinazioni.

Characterized by the clean lines of modern design, the Puck One 48V suspension for the "track design" models by Macrolux is an elegant and versatile piece to use in dining rooms, hallways and more. The extraordinary Puck collection consists of functional and compact lights that adapt to any style thanks to the different variations.



96



4



2

Puck 48 vertical

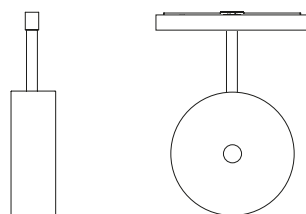
Applicazione architettonica,
compatibile con i binari
della collezione "Track De-
sign" di Macrolux.

Architectural application,
compatible with the tracks
of the "Track Design" col-
lection by Macrolux.





Puck 48 vertical



finiture: bronzo, bianco, nero.
finishing: bronze, white, black.

Puck 48 Vertical è il connubio perfetto tra decoro e funzione. Progettata per adattarsi a quasi tutti gli spazi, vi permette di creare un ambiente caldo e luminoso. Realizzata in alluminio verniciato bianco, nero o anodizzato bronzo. Alloggia una sorgente LED ad emissione diretta ed indiretta. Compatibile con binari della collezione "Track Design" di Macrolux.

Puck 48 Vertical is the perfect combination of decor and function. Designed to fit almost any space, it allows you to create a warm, bright atmosphere. Made of white, black or bronze anodized aluminum. Houses a direct and indirect LED light source. Compatible with tracks from the "Track Design" collection by Macrolux.



96



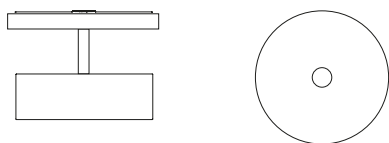
4



2



Puck 48 horizontal



finiture: bronzo, bianco, nero.
finishing: bronze, white, black.

Puck 48 horizontal è il connubio perfetto tra decoro e funzione. Progettata per adattarsi a quasi tutti gli spazi, vi permette di creare un ambiente caldo e luminoso. Realizzata in alluminio verniciato bianco, nero o anodizzato bronzo. Alloggia una sorgente LED ad emissione diretta ed indiretta. Compatibile con binari della collezione "Track Design" di Macrolux.

Puck 48 horizontal is the perfect combination of decor and function. Designed to fit almost any space, it allows you to create a warm, bright atmosphere. Made of white, black or bronze anodized aluminum. Houses a direct and indirect LED light source. Compatible with tracks from the "Track Design" collection by Macrolux.



96

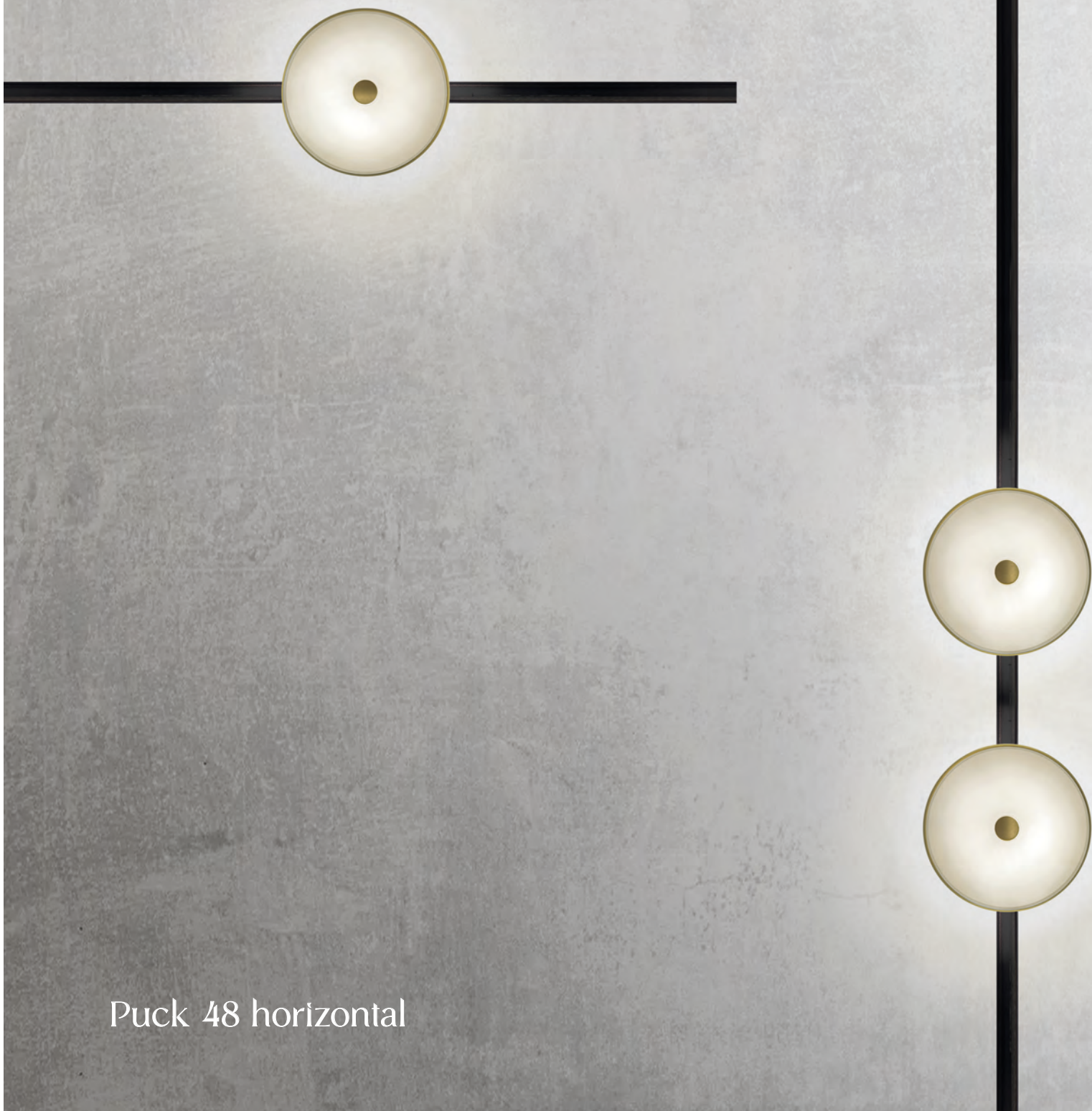


4



2





Puck 48 horizontal

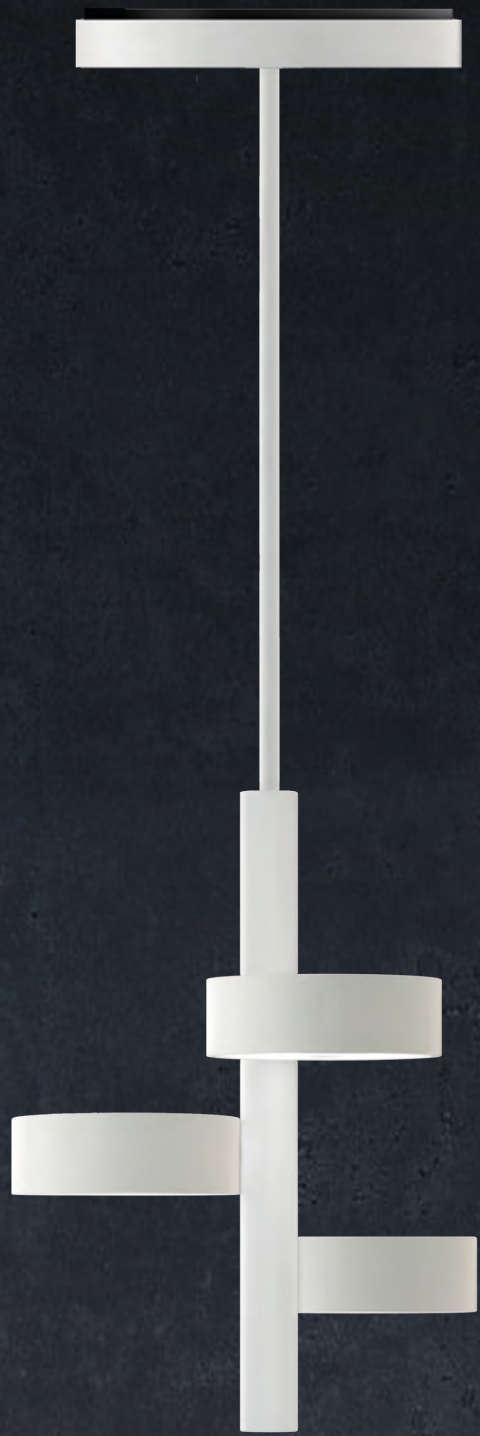
Puck Three

Esplorando una nuova interpretazione della luce, la nostra visione integra architettura e design per creare un'esperienza unica ed emozionante.

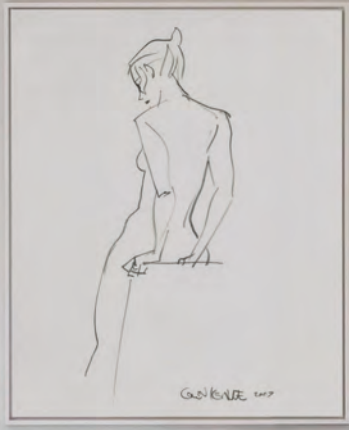
Exploring a new interpretation of light, our vision integrates architecture and design to create a unique and exciting experience.















Il terminale cilindrico ospita un riflettore anodizzato nero e la lente asferica, una soluzione tecnica volta a minimizzare la dispersione della luce e creare un effetto spot preciso sul piano di appoggio.

The cylindrical end cap houses a black anodized reflector and the aspherical lens, a technical solution aimed at minimizing light dispersion and creating a precise spot effect on the resting surface.





La cura dei dettagli costruttivi di Puck valorizza l'eleganza del suo design. In particolare, l'anello presente nel proiettore centrale, le conferisce slancio e dinamicità, e rappresenta un elemento distintivo e riconoscibile.

The attention to construction details enhances the elegance of Puck's design. In particular, the ring present in the central spotlight gives it lightness and dynamism, making it a distinctive and recognizable element.

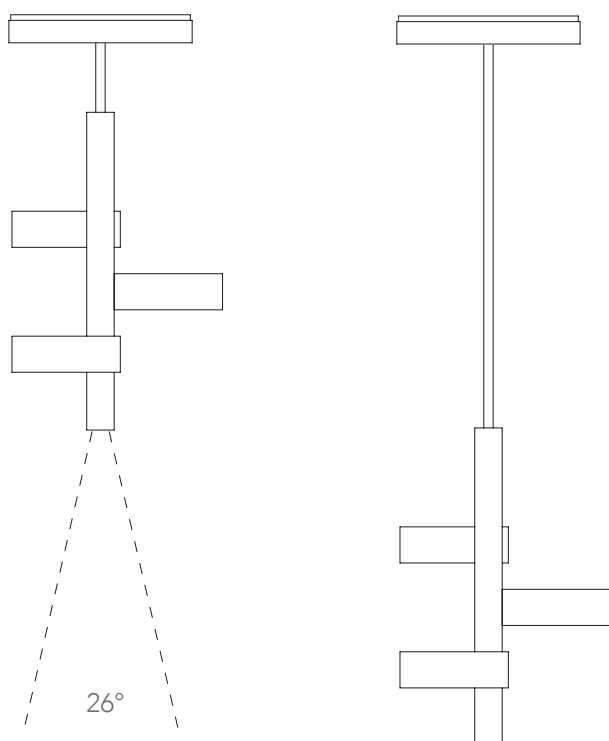


Puck Three

finiture: bronzo, bianco, nero.
finishing: bronze, white, black.

Puck Three è il risultato di un'interpretazione completamente nuova della luce e delle sue qualità. Un concetto di design unico, guidato dal desiderio di creare una lampada tanto espressiva quanto funzionale. Comfort, lusso, piacere ed estetica elegante si fondono in un unico prodotto che controlla la luce per fondersi con l'ambiente circostante e migliorare la vita quotidiana. La versione Casambi con il controllo wireless, consente un utilizzo versatile e flessibile in grado di adattarsi a qualsiasi ambiente e di offrire un'ampia gamma di scenari di regolazione. Ad esempio in modalità "lume di candela" del solo proiettore alloggiato nel corpo centrale.

Puck Three is the result of a completely new interpretation of light and its qualities. A unique design concept, driven by the desire to create a lamp that is as expressive as it is functional. Comfort, luxury, pleasure and elegant aesthetics merge into a single product that controls light to blend into the surrounding environment and improve daily life. The Casambi wireless control version allows versatile and flexible use that can adapt to any environment and offer a wide range of control scenarios. For example, in "candlelight" mode of the only projector housed in the central body.



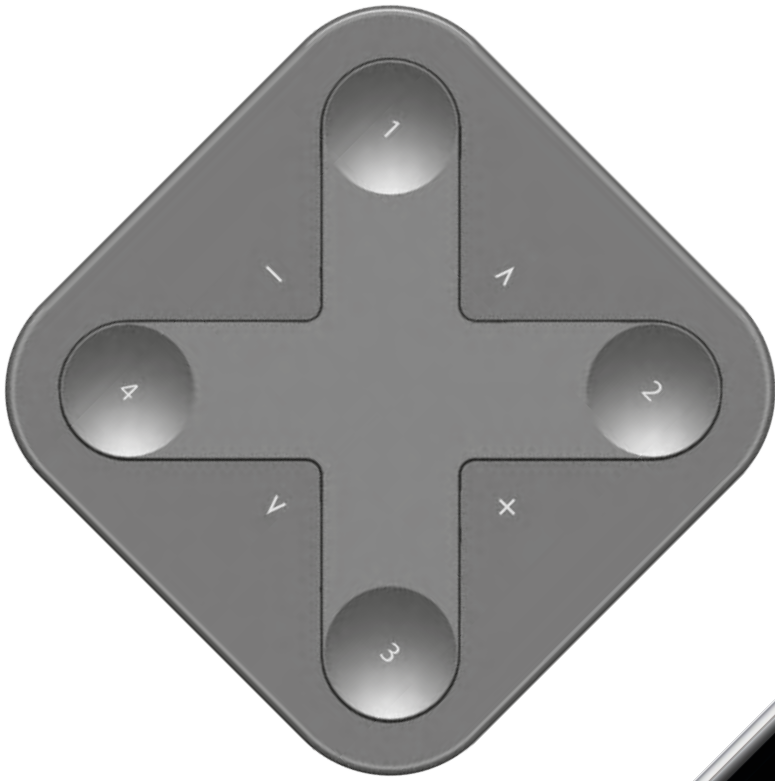
96



4



2



CASAMBI



Controller

Il controller Casambi integrato nelle lampade Puck permette di controllare l'illuminazione attraverso l'applicazione Casambi per smartphone, smartwatch e tablet (disponibile sia per iOS che per Android).

Casambi utilizza la tecnologia Bluetooth Low Energy (BLE) per comunicare con i dispositivi mobili e altre lampade compatibili all'interno della rete di illuminazione.

Le funzioni di controllo offerte dall'App Casambi includono:

- Accensione/spegnimento
- Regolazione dell'intensità luminosa (dimming)
- Creazione di scene e programmazione di orari
- Gruppi di lampade e controllo individuale

In conclusione, la lampada con controller Casambi offre un'illuminazione di alta qualità, design moderno e un controllo semplice e intuitivo, rendendo questa soluzione di illuminazione perfetta per ambienti moderni e smart.

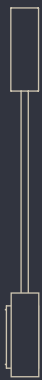
The Casambi controller integrated into Puck lamps allows lighting control through the Casambi app for smartphones, smartwatch, and tablets (available for both iOS and Android).

Casambi uses Bluetooth Low Energy (BLE) technology to communicate with mobile devices and other compatible lamps within the lighting network.

The control functions offered by the Casambi app include:

- On/off switching
- Brightness adjustment (dimming)
- Creation of scenes and scheduling
- Lamp groups and individual control

In conclusion, the lamp with Casambi controller offers high-quality lighting, modern design, and simple and intuitive control, making it a perfect lighting solution for modern and smart environments.



puck lite



puck

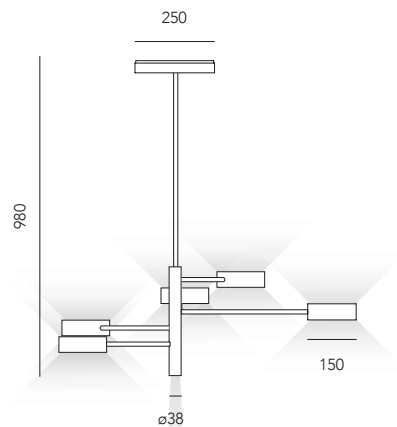
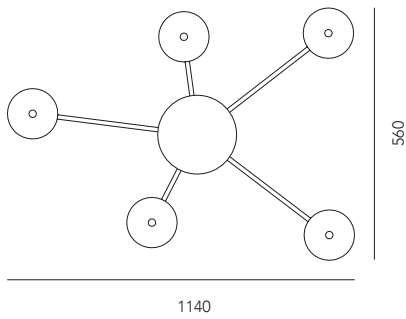


puck small



puck mono

Puck Five Limited Edition



Puck Five

ON-OFF IP₄₀

Apparecchio a sospensione con LED biemissione più LED spot 26°, driver incluso.
Suspension lighting fixture with double bi-emission LED plus LED 26°, driver included.

1611.5100.-- 2 4 96
 61W 230V 3000°K 8000lm 132lm/W CRI>90

1611.5100.2700.-- 2 4 96
 61W 230V 2700°K 7700lm 125lm/W CRI>90

Puck Five

PUSH IP₄₀

Apparecchio a sospensione con LED biemissione, più LED spot 26°, comprensivo di driver PUSH.
Wall-mounted LED fixture with bi-emission emission, plus LED 26°, PUSH driver included.

1611.5100.03.-- 2 4 96
 61W 230V 3000°K 8000lm 132lm/W CRI>90

1611.5100.03.2700.01.-- 2 4 96
 61W 230V 2700°K 7700lm 125lm/W CRI>90

2 nero opaco
 matt black

4 bianco opaco
 matt white

96 bronzo anodizzato
 + asta nera/base nera
 anodized bronze
 + black rod/black base

Su richiesta tige allungabile con modularità 300/500/1000mm
 On request extendable rod with modularity 300/500/1000mm

L'apparecchio è dotato di una doppia alimentazione per gestire la luce in modo indipendente, sia per i corpi luce che per lo spot downlight singolo. Questa soluzione consente di gestire in modo più preciso e flessibile l'illuminazione dell'ambiente, ad esempio regolando la luminosità dell'intero apparecchio e accendendo o spegnendo lo spot downlight singolo a seconda delle necessità.

Independently, both for the light fixtures and for the single downlight spot. This solution allows for more precise and flexible management of the environment's lighting, for example, by adjusting the brightness of the entire fixture and turning the single downlight spot on or off as needed.

Il prodotto "Puck Five limited edition" è stato creato per celebrare il prestigioso evento delle Olimpiadi di Milano Cortina 2026.

Per commemorare questa importante manifestazione sportiva verranno prodotti **2026 pezzi**.

I cinque anelli simboleggiano i cinque continenti, proprio come i cinque cerchi olimpici che uniscono i popoli di tutto il mondo in uno spirito di competizione e fair play.

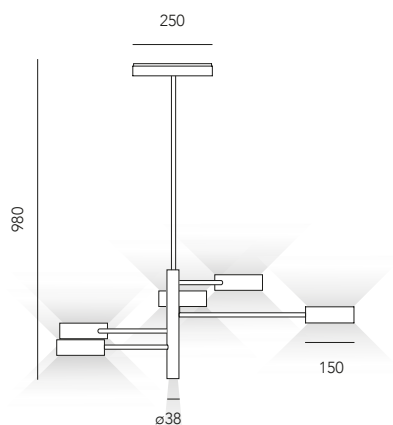
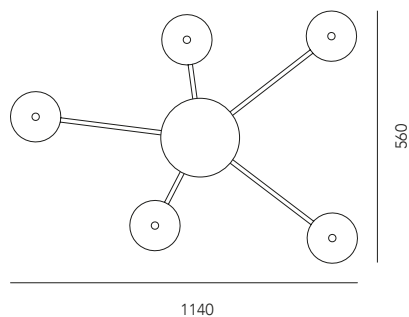
The "Puck Five limited edition" product was created to celebrate the prestigious Milan Cortina 2026 Olympic event.

To commemorate this major sporting event, **2026 pieces** will be produced.

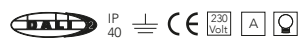
The five rings symbolize the five continents, just like the five Olympic rings that bring together people from all over the world in a spirit of competition and fair play.

Puck Five Limited Edition

macrolux.store



Puck Five



Apparecchio a sospensione con LED biemissione, più LED spot 26°, comprensivo di driver DALI.

Wall-mounted LED fixture with bi-emission emission, plus LED 26°, DALI driver included.

1611.5100.01.-- 2 4 96
61W 230V 3000°K 8000lm 132lm/W CRI>90

1611.5100.01.2700.01.-- 2 4 96
61W 230V 2700°K 7700lm 125lm/W CRI>90

Puck Five



Apparecchio a parete con LED biemissione più LED spot 26° comprensivo di driver controllo CASAMBI.

Wall-mounted LED fixture with bi-emission emission, plus LED 26°, CASAMBI control driver included.

1611.5100.02.-- 2 4 96
61W 230V 3000°K 8000lm 132lm/W CRI>90

1611.5100.02.2700.-- 2 4 96
61W 230V 2700°K 7700lm 125lm/W CRI>90

2 nero opaco
matt black

4 bianco opaco
matt white

96 bronzo anodizzato
+ asta nera/base nera
+ black rod/black base

Su richiesta tige allungabile con modularità 300/500/1000mm
On request extendable rod with modularity 300/500/1000mm

L'apparecchio è dotato di una doppia alimentazione per gestire la luce in modo indipendente, sia per i corpi luce che per lo spot downlight singolo. Questa soluzione consente di gestire in modo più preciso e flessibile l'illuminazione dell'ambiente, ad esempio regolando la luminosità dell'intero apparecchio e accendendo o spegnendo lo spot downlight singolo a seconda delle necessità.

Independently, both for the light fixtures and for the single downlight spot. This solution allows for more precise and flexible management of the environment's lighting, for example, by adjusting the brightness of the entire fixture and turning the single downlight spot on or off as needed.

Il prodotto "Puck Five limited edition" è stato creato per celebrare il prestigioso evento delle Olimpiadi di Milano Cortina 2026.

Per commemorare questa importante manifestazione sportiva verranno prodotti **2026 pezzi**.

I cinque anelli simboleggiano i cinque continenti, proprio come i cinque cerchi olimpici che uniscono i popoli di tutto il mondo in uno spirito di competizione e fair play.

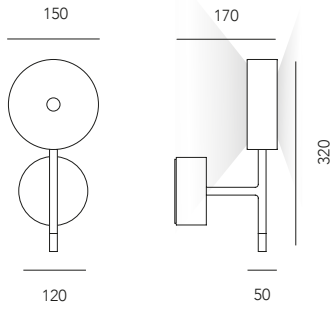
The "Puck Five limited edition" product was created to celebrate the prestigious Milan Cortina 2026 Olympic event.

To commemorate this major sporting event, **2026 pieces** will be produced.

The five rings symbolize the five continents, just like the five Olympic rings that bring together people from all over the world in a spirit of competition and fair play.

Puck

macrolux.store



Puck

ON-OFF IP_{40} CE A L

Apparecchio a parete con singolo LED biemissione, driver incluso.
 Wall mounted lighting fixture with bi-emission single LED, driver included.

1611.0001.-- 296 2296 4496
 10,4W 230V 3000°K 1370lm 132lm/W CRI>90

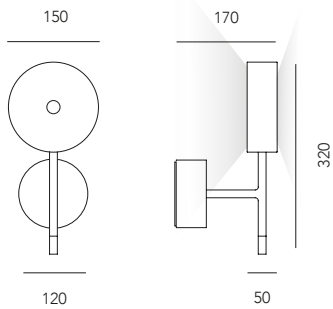
1611.0001.2700.-- 296 2296 4496
 10,4W 230V 2700°K 1310lm 125lm/W CRI>90

296 nero opaco asta/base
 bronzo terminale/corpo
 matt black rod/base
 bronze body/terminal

2296 nero opaco asta/base/corpo
 bronzo terminale
 matt black rod/base/body
 bronze terminal

4496 bianco opaco asta/base/corpo
 bronzo terminale
 matt white rod/base/body
 bronze terminal

Puck



Puck

PUSH  IP_{40} CE A L

Apparecchio a parete con singolo LED biemissione, completo di driver DALI/
 PUSH.
 Wall-mounted LED fixture with bi-emission emission, including DALI/PUSH
 driver.

1611.0001.01.-- 296 2296 4496
 10,4W 230V 3000°K 1370lm 132lm/W CRI>90

1611.0001.01.2700.-- 296 2296 4496
 10,4W 230V 2700°K 1310lm 125lm/W CRI>90

Puck

CASAMBI IP_{40} CE A L

Apparecchio a parete con singolo LED biemissione comprensivo di controllo
 CASAMBI.
 Wall-mounted LED fixture with bidirectional emission, including CASAMBI
 control.

1611.0001.02.-- 296 2296 4496
 10,4W 230V 3000°K 1370lm 132lm/W CRI>90

1611.0001.02.2700.-- 296 2296 4496
 10,4W 230V 2700°K 1310lm 125lm/W CRI>90

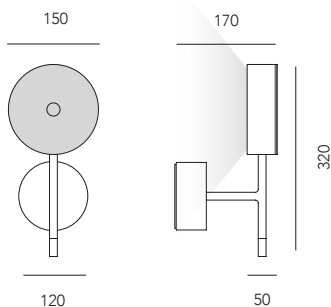
296 nero opaco asta/base
 bronzo terminale/corpo
 matt black rod/base
 bronze body/terminal

2296 nero opaco asta/base/corpo
 bronzo terminale
 matt black rod/base/body
 bronze terminal

4496 bianco opaco asta/base/corpo
 bronzo terminale
 matt white rod/base/body
 bronze terminal

Puck Cover

macrolux.store



Puck Cover

ON-OFF IP 40

Apparecchio a parete con singolo LED monoemissione, comprensivo di copertura frontale e driver.

Wall-mounted single LED fixture with unidirectional emission, including driver and front cover.

1611.0002.-- 296 2296 4496
10,4W 230V 3000°K 1370lm 132lm/W CRI>90

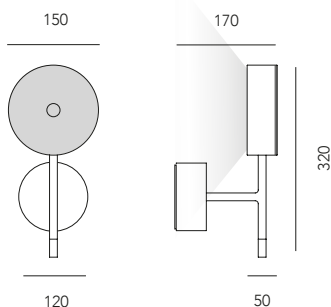
1611.0002.2700.-- 296 2296 4496
10,4W 230V 2700°K 1310lm 125lm/W CRI>90

296 nero opaco asta/base
bronzio terminale/corpo
matt black rod/base
bronze body/terminal

2296 nero opaco asta/base/
corpo/
bronzio terminale
matt black rod/base/body
bronze terminal

4496 bianco opaco asta/base/corpo
bronzio terminale
matt white rod/base/body
bronze terminal

Puck Cover



Puck Cover

PUSH IP 40

Apparecchio a parete con singolo LED monoemissione, comprensivo di copertura frontale e driver DALI/PUSH.

Wall-mounted single LED fixture with unidirectional emission, including front cover and DALI/PUSH.

1611.0002.01.-- 296 2296 4496
10,4W 230V 3000°K 1370lm 132lm/W CRI>90

1611.0002.01.2700.-- 296 2296 4496
10,4W 230V 2700°K 1310lm 125lm/W CRI>90

Puck Cover

CASAMBI IP 40

Apparecchio a parete con singolo LED a monoemissione comprensivo di copertura frontale e driver con controllo CASAMBI.

Wall-mounted single LED fixture with unidirectional emission, including front cover and CASAMBI control driver.

1611.0002.02.-- 296 2296 4496
10,4W 230V 3000°K 1370lm 132lm/W CRI>90

1611.0002.02.2700.-- 296 2296 4496
10,4W 230V 2700°K 1310lm 125lm/W CRI>90

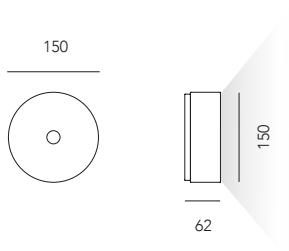
296 nero opaco asta/base
bronzio terminale/corpo
matt black rod/base
bronze body/terminal

2296 nero opaco asta/base/corpo
bronzio terminale
matt black rod/base/body
bronze terminal

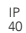



4496 bianco opaco asta/base/corpo
bronzio terminale
matt white rod/base/body
bronze terminal

Puck Mono

macrolux.store



Puck Mono

ON-OFF    

Apparecchio a parete/soffitto con LED a monoemissione, driver incluso.
Wall/Ceiling-mounted fixture with uni-directional LED, driver included.

1611.0005.-- 2 4 96
5,2W 230V 3000°K 685lm 132lm/W CRI>90

1611.0005.2700.-- 2 4 96
5,2W 230V 2700°K 655lm 125lm/W CRI>90

1611.0006.-- 2 4 96
10,4W 230V 3000°K 1370lm 132lm/W CRI>90

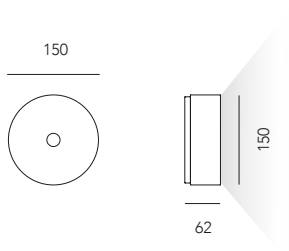
1611.0006.2700.-- 2 4 96
10,4W 230V 2700°K 1310lm 125lm/W CRI>90

2 nero opaco
matt black

4 bianco opaco
matt white

96 bronzo anodizzato
+ base nera
anodized bronze
+ black base

Puck Mono



Puck Mono

PUSH     

Apparecchio a parete/soffitto con LED monoemissione, comprensivo di driver DALI/PUSH.
Wall/Ceiling-mounted fixture with uni-directional LED, including DALI/PUSH driver.

1611.0005.01.-- 2 4 96
5,2W 230V 3000°K 685lm 132lm/W CRI>90

1611.0005.01.2700.-- 2 4 96
5,2W 230V 2700°K 655lm 125lm/W CRI>90

1611.0006.01.-- 2 4 96
10,4W 230V 3000°K 1370lm 132lm/W CRI>90

1611.0006.01.2700.-- 2 4 96
10,4W 230V 2700°K 1310lm 125lm/W CRI>90

Puck Mono

CASAMBI    

Apparecchio a parete/soffitto con LED a monoemissione comprensivo di driver controllo CASAMBI.
Wall/Ceiling-mounted fixture with uni-directional LED, including CASAMBI control driver.

1611.0005.02.-- 2 4 96
5,2W 230V 3000°K 685lm 132lm/W CRI>90

1611.0005.02.2700.-- 2 4 96
5,2W 230V 2700°K 655lm 125lm/W CRI>90

1611.0006.02.-- 2 4 96
10,4W 230V 3000°K 1370lm 132lm/W CRI>90

1611.0006.02.2700.-- 2 4 96
10,4W 230V 2700°K 1310lm 125lm/W CRI>90

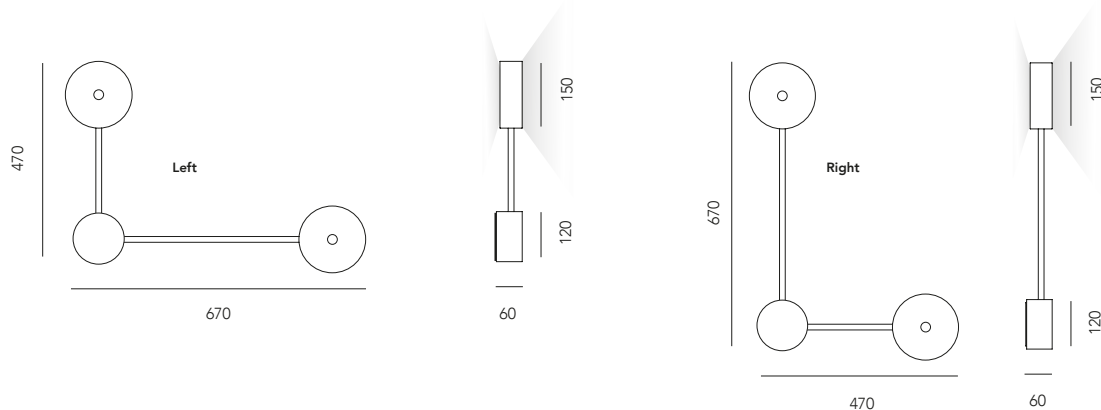
2 nero opaco
matt black

4 bianco opaco
matt white

96 bronzo anodizzato
+ base nera
anodized bronze
+ black base

Puck Lite

macrolux.store



Puck Lite

ON-OFF IP 40

Apparecchio a parete/soffitto con LED monoemissione, driver incluso.
Wall/Ceiling-mounted fixture with uni-directional LED, driver included.

Left

1611.0010.-- 2 4 96
2x 5,2W 230V 3000°K 2x 685lm 132lm/W CRI>90

1611.0010.2700.-- 2 4 96
2x 5,2W 230V 2700°K 2x 655lm 125lm/W CRI>90

Right

1611.0020.-- 2 4 96
2x 5,2W 230V 3000°K 2x 685lm 132lm/W CRI>90

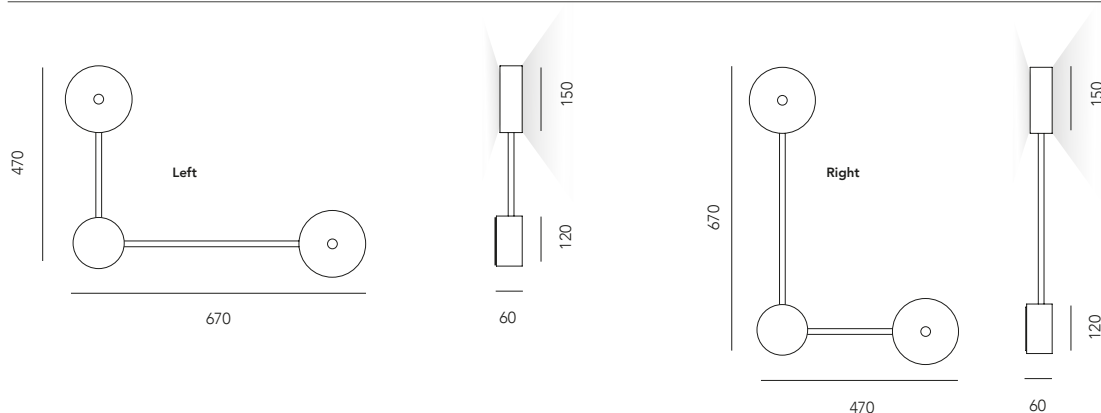
1611.0020.2700.-- 2 4 96
2x 5,2W 230V 2700°K 2x 655lm 125lm/W CRI>90

2 nero opaco
matt black

4 bianco opaco
matt white

96 bronzo anodizzato
+ asta nera/base nera
anodized bronze
+ black rod/black base

Puck Lite



Puck Lite

PUSH IP 40

Apparecchio a parete/soffitto con LED monoemissione, comprensivo di driver DALI.
Wall/Ceiling-mounted fixture with uni-directional LED, including DALI driver.

Left

1611.0010.01-- 2 4 96
2x 5,2W 230V 3000°K 2x 685lm 132lm/W CRI>90

1611.0010.01.2700.-- 2 4 96
2x 5,2W 230V 2700°K 2x 655lm 125lm/W CRI>90

Right

1611.0020.01-- 2 4 96
2x 5,2W 230V 3000°K 2x 685lm 132lm/W CRI>90

1611.0020.01.2700.-- 2 4 96
2x 5,2W 230V 2700°K 2x 655lm 125lm/W CRI>90

Puck Lite

CASAMBI IP 40

Apparecchio a parete/soffitto con LED a monoemissione comprensivo di driver controllo CASAMBI.
Wall/Ceiling-mounted fixture with uni-directional LED, including CASAMBI control driver.

Left

1611.0010.02.-- 2 4 96
2x 5,2W 230V 3000°K 2x 685lm 132lm/W CRI>90

1611.0010.02.2700.-- 2 4 96
2x 5,2W 230V 2700°K 2x 655lm 125lm/W CRI>90

Right

1611.0020.02.-- 2 4 96
2x 5,2W 230V 3000°K 2x 685lm 132lm/W CRI>90

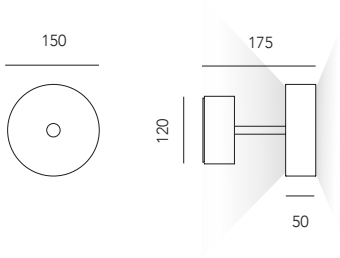
1611.0020.02.2700.-- 2 4 96
2x 5,2W 230V 2700°K 2x 655lm 125lm/W CRI>90

2 nero opaco
matt black

4 bianco opaco
matt white

96 bronzo anodizzato
+ asta nera/base nera
anodized bronze
+ black rod/black base

Puck Small



Puck Small

ON-OFF IP_{40} CE A L

Apparecchio a parete/soffitto con singolo LED a biemissione driver incluso.
Wall/Ceiling-mounted fixture with a single bi-directional LED, driver included.

1611.0003.-- 2 4 96
10,4W 230V 3000°K 1370lm 132lm/W CRI>90

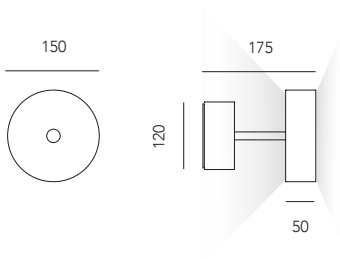
1611.0003.2700.-- 2 4 96
10,4W 230V 2700°K 1310lm 125lm/W CRI>90

2 nero opaco
matt black

4 bianco opaco
matt white

96 bronzo anodizzato
+ asta nera/base nera
anodized bronze
+ black rod/black base

Puck Small



Puck Small

PUSH  IP_{40} CE A L

Apparecchio a parete/soffitto con singolo LED biemissione, comprensivo di driver DALI/PUSH.
Wall/ceiling fixture with single bi-emission LED, including DALI/PUSH driver.

1611.0003.01.-- 2 4 96
10,4W 230V 3000°K 1370lm 132lm/W CRI>90

1611.0003.01.2700.-- 2 4 96
10,4W 230V 2700°K 1310lm 125lm/W CRI>90

2 nero opaco
matt black

4 bianco opaco
matt white

96 bronzo anodizzato
+ asta nera/base nera
anodized bronze
+ black rod/black base

Puck Small

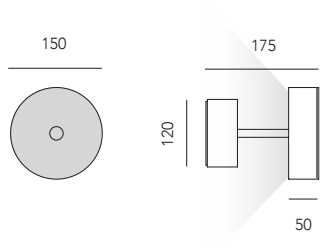
CASAMBI IP_{40} CE A L

Apparecchio a parete/soffitto con singolo LED a biemissione comprensivo di driver controllo CASAMBI.
Wall-mounted fixture with a single bi-directional LED, including a CASAMBI control driver.

1611.0003.02.-- 2 4 96
10,4W 230V 3000°K 1370lm 132lm/W CRI>90

1611.0003.02.2700.-- 2 4 96
10,4W 230V 2700°K 1310lm 125lm/W CRI>90

Puck Small Cover

macrolux.store


Puck Small Cover

ON-OFF

Apparecchio a parete/soffitto con singolo LED monoemissione, comprensivo di copertura frontale e driver.

Wall/Ceiling-mounted fixture with a single uni-directional LED, including front cover and driver.

1611.0004.-- 2 4 96
10,4W 230V 3000°K 1370lm 132lm/W CRI>90

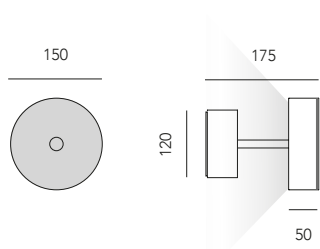
1611.0004.2700.-- 2 4 96
10,4W 230V 2700°K 1310lm 125lm/W CRI>90

2 nero opaco
matt black

4 bianco opaco
matt white

96 bronzo anodizzato
+ asta nera/base nera
anodized bronze
+ black rod/black base

Puck Small Cover



Puck Small Cover

PUSH

Apparecchio a parete/soffitto con singolo LED monoemissione, comprensivo di copertura frontale e driver DALI/PUSH.

Wall/Ceiling-mounted fixture with a single uni-directional LED, including front cover and DALI/PUSH driver.

1611.0004.01.-- 2 4 96
10,4W 230V 3000°K 1370lm 132lm/W CRI>90

1611.0004.01.2700.-- 2 4 96
10,4W 230V 2700°K 1310lm 125lm/W CRI>90

Puck Small Cover

CASAMBI

Apparecchio a parete/soffitto con singolo LED a monoemissione comprensivo di copertura frontale e driver con controllo CASAMBI.

Wall/Ceiling-mounted fixture with a single uni-directional LED, including front cover and CASAMBI control driver.

1611.0004.02.-- 2 4 96
10,4W 230V 3000°K 1370lm 132lm/W CRI>90

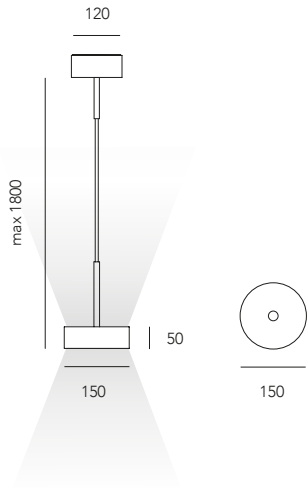
1611.0004.02.2700.-- 2 4 96
10,4W 230V 2700°K 1310lm 125lm/W CRI>90

2 nero opaco
matt black

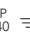
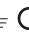

4 bianco opaco
matt white

96 bronzo anodizzato
+ asta nera/base nera
anodized bronze
+ black rod/black base

Puck One



Puck One

ON-OFF ^{IP}40   

Apparecchio a sospensione parete con LED a biemissione, driver incluso.
Suspension lighting fixture with double bi-emission LED, driver included.

1611.0100.-- 2 4 96
 2x 5,2W 230V 3000°K 2x 680lm 132lm/W CRI>90

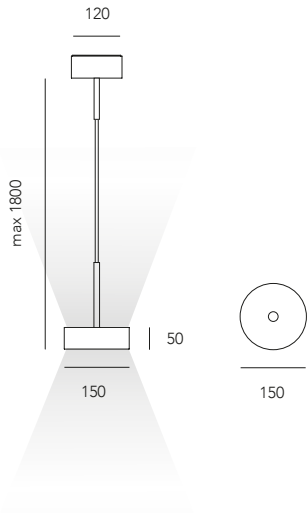
1611.0100.2700.-- 2 4 96
 2x 5,2W 230V 2700°K 2x 655lm 125lm/W CRI>90

2 nero opaco
matt black

4 bianco opaco
matt white

96 bronzo anodizzato
 + asta nera/base nero
*anodized bronze
 + black rod/black base*

Puck One



Puck One

PUSH  ^{IP}40   

Apparecchio a sospensione con LED biemissione, comprensivo di driver DALI/PUSH.
Wall-mounted LED fixture with bi-emission emission, including DALI/PUSH driver.

1611.0100.01.-- 2 4 96
 2x 5,2W 230V 3000°K 2x 680lm 132lm/W CRI>90

1611.0100.01.2700.-- 2 4 96
 2x 5,2W 230V 2700°K 2x 655lm 125lm/W CRI>90

Puck One

CASAMBI ^{IP}40   

Apparecchio a parete con LED a biemissione comprensivo di driver controllo CASAMBI.
Wall-mounted LED fixture with bi-emission emission, including CASAMBI control driver.

1611.0100.02.-- 2 4 96
 2x 5,2W 230V 3000°K 2x 680lm 132lm/W CRI>90

1611.0100.02.2700.-- 2 4 96
 2x 5,2W 230V 2700°K 2x 655lm 125lm/W CRI>90

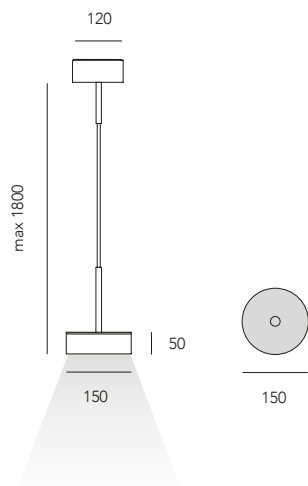
2 nero opaco
matt black

4 bianco opaco
matt white

96 bronzo anodizzato
 + asta nera/base nero
*anodized bronze
 + black rod/black base*

Puck One Cover

macrolux.store



Puck One Cover

ON-OFF IP_{40} CE A L

Apparecchio a sospensione con LED ad emissione diretta, comprensivo di retrocopertura e driver.

Suspension fixture with direct emission LED, including rear cover and driver.

1611.0200.-- 2 4 96
10,4W 230V 3000°K 1370lm 132lm/W CRI>90

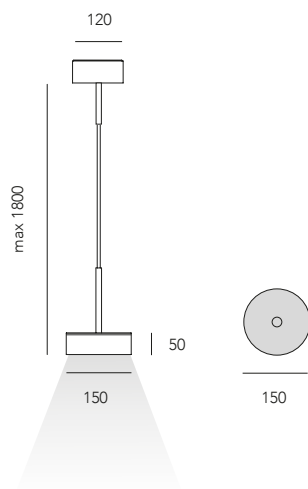
1611.0200.2700.-- 2 4 96
10,4W 230V 2700°K 13105lm 125lm/W CRI>90

2 nero opaco
matt black

4 bianco opaco
matt white

96 bronzo anodizzato
+ asta nera/base nero
anodized bronze
+ black rod/black base

Puck One Cover



Puck One Cover

PUSH  IP_{40} CE A L

Apparecchio a sospensione con LED ad emissione diretta, comprensivo di retrocopertura e driver DALI/PUSH.

Suspension fixture with direct emission LED, including rear cover and DALI/PUSH driver.

1611.0200.01.-- 2 4 96
10,4W 230V 3000°K 2x 680lm 132lm/W CRI>90

1611.0200.01.2700.-- 2 4 96
10,4W 230V 2700°K 2x 680lm 125lm/W CRI>90

Puck One Cover

CASAMBI IP_{40} CE A L

Apparecchio a sospensione con LED ad emissione diretta comprensivo di retrocopertura e driver con controllo CASAMBI.

Suspension fixture with direct emission LEDs, including rear cover and driver with CASAMBI control.

1611.0200.02.-- 2 4 96
10,4W 230V 3000°K 2x 680lm 132lm/W CRI>90

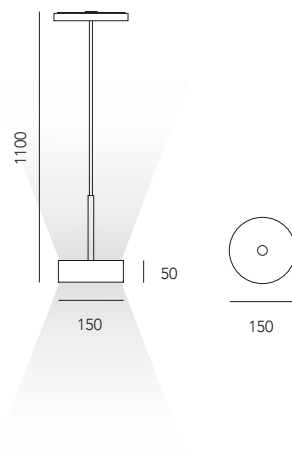
1611.0200.02.2700.-- 2 4 96
10,4W 230V 2700°K 2x 655lm 125lm/W CRI>90

2 nero opaco
matt black

4 bianco opaco
matt white

96 bronzo anodizzato
+ asta nera/base nero
anodized bronze
+ black rod/black base

Puck One 48



Puck One 48

ON-OFF IP 40 CE 48v A

Apparecchio a sospensione LED a biemissione con adattatore meccanico con elettronica step-down 48v.

Double emission LED pendant luminaire with mechanical adapter with 48v step-down electronics.

1611.0148.-- 2 4 96
2x 5,2W 48V 3000°K 2x 680lm 132lm/W CRI>90

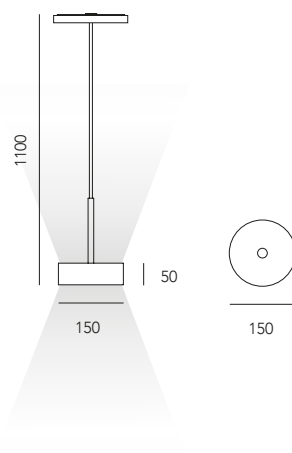
1611.0148.2700.-- 2 4 96
2x 5,2W 48V 2700°K 2x 655lm 125lm/W CRI>90

2 nero opaco
+ adattatore nero
matt black
+ *black adapter*

4 bianco opaco
+ adattatore bianco
matt white
+ *white adapter*

96 bronzo anodizzato
+ adattatore nero
anodized bronze
+ *black adapter*

Puck One 48



Puck One 48

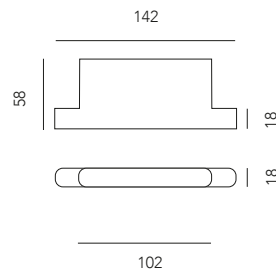
DALI IP 40 CE 48V A

Apparecchio a sospensione LED a biemissione con adattatore meccanico con elettronica step-down 48v DALI.

LED dual emission suspended luminaire with mechanical adaptor with 48v DALI step-down electronics.

1611.0148.01.-- 2 4 96
2x 5,2W 48V 3000°K 2x 680lm 132lm/W CRI>90

1611.0148.01.2700.-- 2 4 96
2x 5,2W 48V 2700°K 2x 655lm 125lm/W CRI>90



DALI GATE

CASAMBI CE 48v

Il "DALI GATE CASAMBI" è un componente del sistema di controllo wireless che permette di gestire le luci tramite dispositivi mobili in Bluetooth.
The DALI GATE CASAMBI is a component of the wireless control system that allows lights to be managed via mobile devices using Bluetooth.

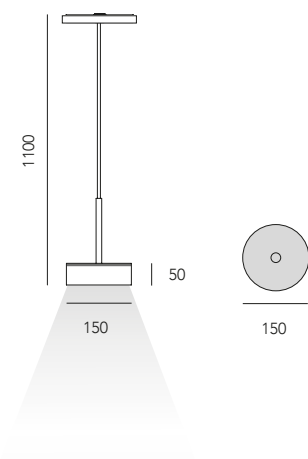
1.1200EN1812 2
DALI GATE CASAMBI

2 nero opaco
matt black

4 bianco opaco
matt white

Puck One 48 Cover

macrolux.store



Puck One 48 Cover

ON-OFF IP 40 CE 48v A

Apparecchio a sospensione LED a emissione diretta con adattatore meccanico con elettronica step-down 48v, comprensivo di retro copertura.
Direct emission LED suspension fixture with mechanical adapter and 48V step-down electronics, including a rear cover.

1611.0248.-- 2 4 96
 10,4W 48V 3000°K 1370lm 132lm/W CRI>90

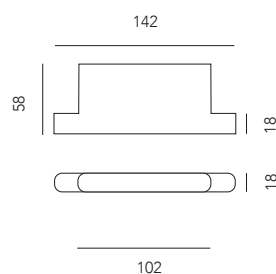
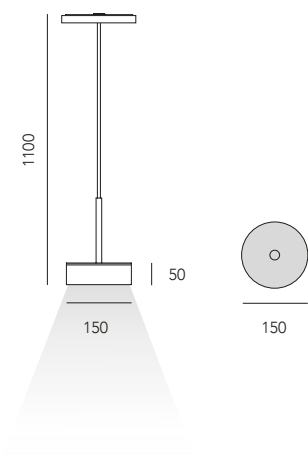
1611.0248.2700.-- 2 4 96
 10,4W 48V 2700°K 1310lm 125lm/W CRI>90

2 nero opaco
 + adattatore nero
matt black
 + black adapter

4 bianco opaco
 + adattatore bianco
matt white
 + white adapter

96 bronzo anodizzato
 + adattatore nero
anodized bronze
 + black adapter

Puck One 48 Cover



Puck One 48 Cover

IP 40 CE 48v A

Apparecchio a sospensione LED a singola emissione con adattatore meccanico con elettronica step-down 48v DALI, comprensivo di retro copertura.
LED single emission suspended luminaire with mechanical adapter with 48V DALI step-down electronics, including rear cover.

1611.0248.01.-- 2 4 96
 10,4W 48V 3000°K 1370lm 132lm/W CRI>90

1611.0248.01.2700.-- 2 4 96
 10,4W 48V 2700°K 1310lm 125lm/W CRI>90

DALI GATE

CASAMBI CE 48v

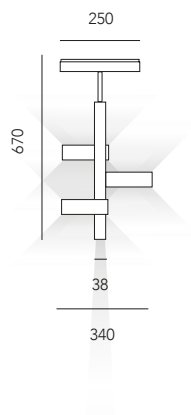
Il "DALI GATE CASAMBI" è un componente del sistema di controllo wireless che permette di gestire le luci tramite dispositivi mobili in Bluetooth.
The DALI GATE CASAMBI is a component of the wireless control system that allows lights to be managed via mobile devices using Bluetooth.

1.1200EN1812 2
 DALI GATE CASAMBI





2 nero opaco
matt black

4 bianco opaco
matt white

Puck Three 670



Puck Three 670



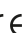

ON-OFF    

Apparecchio a sospensione con LED biemissione più LED spot 26°, driver incluso.
Suspension lighting fixture with double bi-emission LED plus LED 26°, driver included.

1611.3060.-- 2 4 96
 40W 230V 3000°K 5260lm 132lm/W CRI>90

1611.3060.2700.-- 2 4 96
 40W 230V 2700°K 5080lm 125lm/W CRI>90

Puck Three 670

PUSH    

Apparecchio a sospensione con LED biemissione, più LED spot 26°, comprensivo di driver PUSH.
Wall-mounted LED fixture with bi-emission emission, plus LED 26°, PUSH driver included.

1611.3060.03.-- 2 4 96
 40W 230V 3000°K 5260lm 132lm/W CRI>90

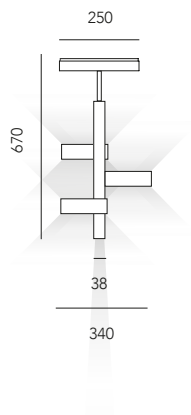
1611.3060.03.2700.-- 2 4 96
 40W 230V 2700°K 5080lm 125lm/W CRI>90

2 nero opaco
matt black






4 bianco opaco
matt white

96 bronzo anodizzato
 + asta nera/base nera
*anodized bronze
 + black rod/black base*

Puck Three 670



Puck Three 670

Apparecchio a sospensione con LED biemissione, più LED spot 26°, comprensivo di driver DALI.
Wall-mounted LED fixture with bi-emission emission, plus LED 26°, DALI driver included.

1611.3060.01.-- 2 4 96
 40W 230V 3000°K 5260lm 132lm/W CRI>90

1611.3060.01.2700.-- 2 4 96
 40W 230V 2700°K 5080lm 125lm/W CRI>90

Puck Three 670

CASAMBI    

Apparecchio a parete con LED biemissione più LED spot 26° comprensivo di driver controllo CASAMBI.
Wall-mounted LED fixture with bi-emission emission, plus LED 26°, CASAMBI control driver included.

1611.3060.02.-- 2 4 96
 40W 230V 3000°K 5260lm 132lm/W CRI>90

1611.3060.02.2700.-- 2 4 96
 40W 230V 2700°K 5080lm 125lm/W CRI>90

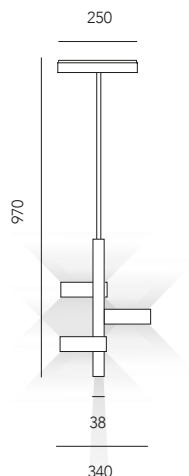
2 nero opaco
matt black

4 bianco opaco
matt white





96 bronzo anodizzato
 + asta nera/base nera
*anodized bronze
 + black rod/black base*

Puck Three 970

macrolux.store



Puck Three 970





ON-OFF    

Apparecchio a sospensione con LED biemissione più LED spot 26°, driver incluso.
Suspension lighting fixture with double bi-emission LED plus LED 26°, driver included.

1611.3100.-- 2 4 96
 40W 230V 3000°K 5260lm 132lm/W CRI>90

1611.3100.2700.-- 2 4 96
 40W 230V 2700°K 5080lm 125lm/W CRI>90

Puck Three 670

PUSH    

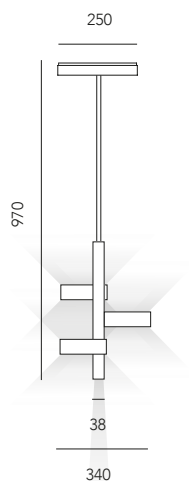
Apparecchio a sospensione con LED biemissione, più LED spot 26°, comprensivo di driver PUSH.
Wall-mounted LED fixture with bi-emission emission, plus LED 26°, PUSH driver included.

1611.3100.03.-- 2 4 96
 40W 230V 3000°K 5260lm 132lm/W CRI>90






1611.3100.03.2700.-- 2 4 96
 40W 230V 2700°K 5080lm 125lm/W CRI>90

2 nero opaco
matt black4 bianco opaco
matt white96 bronzo anodizzato
+ asta nera/base nera
anodized bronze
+ black rod/black base

Puck Three 970



Puck Three 970

Apparecchio a sospensione con LED biemissione, più LED spot 26°, comprensivo di driver DALI.
Wall-mounted LED fixture with bi-emission emission, plus LED 26°, DALI driver included.

1611.3100.01.-- 2 4 96
 40W 230V 3000°K 5260lm 132lm/W CRI>90

1611.3100.01.2700.-- 2 4 96
 40W 230V 2700°K 5080lm 125lm/W CRI>90

Puck Three 970

CASAMBI    

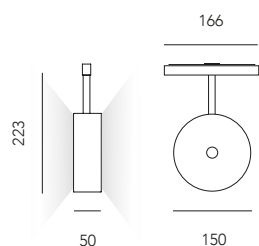
Apparecchio a parete con LED biemissione più LED spot 26° comprensivo di driver controllo CASAMBI.
Wall-mounted LED fixture with bi-emission emission, plus LED 26°, CASAMBI control driver included.

1611.3100.02.-- 2 4 96
 40W 230V 3000°K 5260lm 132lm/W CRI>90

1611.3100.02.2700.-- 2 4 96
 40W 230V 2700°K 5080lm 125lm/W CRI>90

2 nero opaco
matt black4 bianco opaco
matt white96 bronzo anodizzato
+ asta nera/base nera
anodized bronze
+ black rod/black base

Puck 48 vertical



Puck 48 vertical

ON-OFF IP 40

Apparecchio a binario LED a biemissione con adattatore meccanico con elettronica step-down 48v.

Biemission LED track luminaire with mechanical adapter with 48v step-down electronics.

1611.0348.-- 2 4 96
2x 5,2W 48V 3000°K 2x 680lm 132lm/W CRI>90

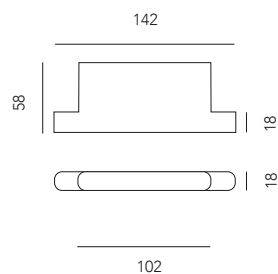
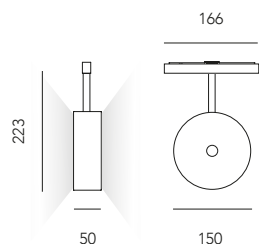
1611.0348.2700.-- 2 4 96
2x 5,2W 48V 2700°K 2x 655lm 125lm/W CRI>90

2 nero opaco
+ adattatore nero
matt black
+ black adapter

4 bianco opaco
+ adattatore bianco
matt white
+ white adapter

96 bronzo anodizzato
+ asta nera/base nera
anodized bronze
+ black rod/black base

Puck 48 vertical



Puck 48 vertical

IP 40

DALI GATE

CASAMBI

Apparecchio a binario LED a biemissione con adattatore meccanico con elettronica step-down 48v DALI.

LED dual emission track luminaire with mechanical adapter with 48V DALI step-down electronics.

1611.0348.01.-- 2 4 96
2x 5,2W 48V 3000°K 2x 680lm 132lm/W CRI>90

1611.0348.01.2700.-- 2 4 96
2x 5,2W 48V 2700°K 2x 655lm 125lm/W CRI>90

Il "DALI GATE CASAMBI" è un componente del sistema di controllo wireless che permette di gestire le luci tramite dispositivi mobili in Bluetooth.

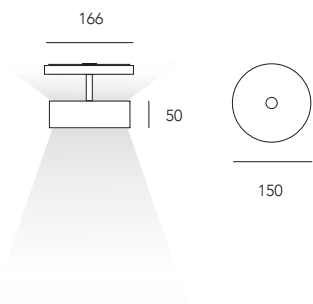
The DALI GATE CASAMBI is a component of the wireless control system that allows lights to be managed via mobile devices using Bluetooth.

1.1200EN1812 2
DALI GATE CASAMBI

2 nero opaco
matt black

4 bianco opaco
matt white

Puck 48 horizontal



Puck 48 horizontal

ON-OFF IP 40 CE 48 Volt

Apparecchio a binario LED a biemissione con adattatore meccanico con elettronica step-down 48v.
Biemission LED track luminaire with mechanical adapter with 48v step-down electronics.

1611.0448.-- 2 4 96
10,4W 48V 3000°K 1370lm 132lm/W CRI>90

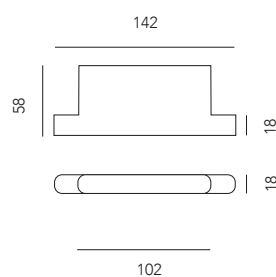
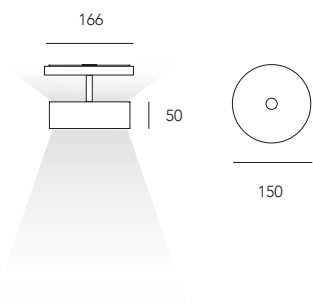
1611.0448.2700.-- 2 4 96
10,4W 48V 2700°K 1310lm 125lm/W CRI>90

2 nero opaco
+ adattatore nero
matt black
+ black adapter

4 bianco opaco
+ adattatore bianco
matt white
+ white adapter

96 bronzo anodizzato
+ asta nera/base nera
anodized bronze
+ black rod/black base

Puck 48 horizontal



Puck 48 horizontal

IP 40 CE 48 Volt

DALI GATE

CASAMBI CE 48 Volt

Apparecchio a binario LED a biemissione con adattatore meccanico con elettronica step-down 48v DALI.
LED dual emission track luminaire with mechanical adapter with 48V DALI step-down electronics.

1611.0448.01.-- 2 4 96
10,4W 48V 3000°K 1370lm 132lm/W CRI>90

1611.0448.01.2700.-- 2 4 96
10,4W 48V 2700°K 1310lm 125lm/W CRI>90

Il "DALI GATE CASAMBI" è un componente del sistema di controllo wireless che permette di gestire le luci tramite dispositivi mobili in Bluetooth.
The DALI GATE CASAMBI is a component of the wireless control system that allows lights to be managed via mobile devices using Bluetooth.

1.1200EN1812 2
DALI GATE CASAMBI

2 nero opaco
matt black

4 bianco opaco
matt white

MACROLUX s.r.l.

69 Via Padania
31020 San Vendemiano
Treviso - Italy

sales@macrolux.it
t. +39 0438 470773

macrolux.it
macrolux.store

Copyright September 2023
© Macrolux srl
All rights reserved

Cod. 0000.0032